



**GRAMMER SEATS**  
FORKLIFTS, CONSTRUCTION, TURF  
AND AGRICULTURAL EQUIPMENT



-  Most articles stated in this catalogue are available from stock, unless they were sold out after the publication of this catalogue. Contact us if you require a similar article that is not shown in this catalogue: alternatives might be available. TVH is a supplier of spare parts and accessories suitable for OEM-equipment. OEM-references and makes are purely indicative and do not imply that the accessories and/or spare parts originate from the original equipment or parts manufacturer. Please consult our general terms and conditions of sale on [www.tvh.com/avv](http://www.tvh.com/avv).
-   
 De meeste in deze catalogus vermelde artikelen zijn uit voorraad leverbaar, tenzij ze na publicatie van deze catalogus uitverkocht werden. Contacteer ons indien u een gelijkaardig artikel wenst dat niet in deze catalogus is opgenomen: het is mogelijk dat wij ook dit kunnen leveren. TVH is een leverancier van reserveonderdelen en accessoires geschikt voor OEM-uitrusting. OEM-referenties en merken zijn enkel indicatief en betekenen niet dat de accessoires en/of onderdelen afkomstig zijn van de originele toestel- of onderdelenfabrikant. Gelieve onze algemene verkoopsvoorwaarden te consulteren op [www.tvh.com/avv](http://www.tvh.com/avv).
-  La plupart des articles mentionnés dans ce catalogue sont disponibles sauf si épuisement du stock à la publication de ce catalogue. Contactez-nous si vous souhaitez un article similaire qui n'est pas repris dans ce catalogue : il est possible que nous pouvons vous le fournir. TVH est un fournisseur de pièces détachées et d'accessoires adaptables sur des marques constructeurs. Les références et marques constructeurs sont uniquement indicatives et n'impliquent pas que les accessoires et/ou pièces proviennent du fabricant de la machine ou de la pièce d'origine. Veuillez consulter nos conditions générales de vente sur [www.tvh.com/avv](http://www.tvh.com/avv).
-  Die in dieser Liste aufgeführten Artikel sind in der Regel ab Lager lieferbar es sei denn, sie sind nach der Veröffentlichung des vorliegenden Katalogs ausverkauft. Kontaktieren Sie uns wenn Sie einen ähnlichen Artikel benötigen dieser aber nicht im Katalog enthalten ist: Alternativen könnten verfügbar sein. TVH ist Lieferant von Ersatzteilen und Zubehör die für die OEM – Ausstattung geeignet sind. OEM-Referenzen und Marken sind rein Indikativ und bedeuten nicht, dass das Zubehör und/oder Ersatzteile vom Originalgeräte- oder Ersatzteilhersteller sind. Druckfehler vorbehalten. Alle Verkäufe unterliegen den allgemeinen Geschäftsbedingungen [www.tvh.com/avv](http://www.tvh.com/avv).
-  La mayoría de los artículos que figuran en este catálogo se encuentran en stock, a menos que tras la publicación de este catálogo se hayan agotado. Contacte con nosotros si desea un artículo similar que no se halle en este catálogo : es posible que podamos ofrecerle aquel que usted necesita. TVH es un proveedor de recambios y accesorios adecuados para equipos OEM. Las referencias y marcas OEM mencionadas son meramente indicativas y no implican que los accesorios y / o recambios procedan del fabricante de maquinaria o recambios original. Por favor, consulte nuestras condiciones de venta en [www.tvh.com/avv](http://www.tvh.com/avv).
-  A maioria dos artigos indicados neste catálogo estão disponíveis em stock, a menos que tenham sido vendidos após a publicação deste catálogo. Contate-nos se precisar de um artigo semelhante que não seja mostrado neste catálogo: alternativas podem estar disponíveis. A TVH é um fornecedor de peças de reposição e acessórios que são adequados para equipamentos OEM. As referências e as marcas OEM são meramente indicativas e não implicam que os acessórios e/ou peças de substituição são provenientes do fabricante original do equipamento ou das peças. Favor consulte nossos termos e condições gerais de venda no [www.tvh.com/avv](http://www.tvh.com/avv).
-  La maggior parte dei ricambi elencati in questo catalogo sono a stock, a meno che dopo la pubblicazione di questo catalogo sono stati venduti. Contattemi se desiderate un articolo simile che non è riportato in questo catalogo: è possibile che possiamo offrire anche questi. TVH è un fornitore di pezzi di ricambio e accessori per OEM, riferimenti OEM e marche sono solo indicativi e non implicano che gli accessori e/o di componenti derivino dal costruttore originale o dal produttore del componente. Si prega di consultare i nostri termini di vendita su [www.tvh.com/avv](http://www.tvh.com/avv).
-  Części z tego katalogu są zazwyczaj na stanie magazynowym. Również części które nie są wyszczególnione w katalogu mogą być dostarczone na zamówienie w najkrótszym możliwym terminie. Opis części O.E.M. jest używany informacyjnie i nie wskazuje na to, że dany produkt jest wyprodukowany przez podanego producenta. Zawartość katalogu może ulec zmianie bez wcześniejszego informowania o tym. Wszystkie użyte zdjęcia, rysunki, nazwy marek, opis i numery służą tylko do identyfikacji. Proszę zapoznać się z naszymi ogólnymi warunkami sprzedaży na [www.tvh.com/avv](http://www.tvh.com/avv).
-  Запчасти из настоящего списка, как правило, имеются в запасе, если только он не распродан. Прочие, не фигурирующие в списке артикулы, могут быть поставлены в самые кратчайшие сроки. Указание оригинальных номеров производителя не предполагает обязательного оригинального происхождения самих деталей. Данный список может изменяться без предварительного уведомления. Все использованные фото, рисунки, иллюстрации, названия брендов, наименования и номера служат исключительно для цели идентификации. Пожалуйста, ознакомьтесь с нашими общими условиями продажи на [www.tvh.com/avv](http://www.tvh.com/avv).



AT YOUR SERVICE  
IN 37 LANGUAGES  
[info@tvh.com](mailto:info@tvh.com)

© May 2020 TVH Parts Holding NV, Brabantstraat 15, BE-8790 Waregem.

TVH®, TotalSource®, CAM Attachments®, Energic Plus® and Bepco® are registered trademarks. All other trademarks are tradenames referred to in this publication are the property of their respective owners. All rights reserved. No part of this publication may be reproduced or communicated in any form or by any means, electronic or mechanical, including copying, recording or use in an information storage or retrieval system, without prior and explicit permission of TVH Parts Holding NV. TVH is a supplier of after-market spare parts and accessories that are fitted for maintenance and repair of OEM-equipment. Printing errors reserved. Photographs and illustrations are included for reference purposes only. All sales are subject to the general terms & conditions of sale on [www.tvh.com/avv](http://www.tvh.com/avv).



passionate people  
clear communication **happy customers**  
**smart solutions** excellent experiences  
**strong ambitions**

Dear customer,

In 1969 Paul Thermote and Paul Vanhalst began servicing and selling agricultural machinery, construction machinery and forklift trucks. Today, TVH is one of the most respected names in the material handling industry. Over the past 50 years we have grown from 2 founders to more than 6000 employees with offices and distribution facilities on every continent.

We are committed to being the worldwide leading supplier of quality replacement parts, safety equipment, and accessories for the material handling and industrial equipment industry. While we take pride in our quality products, we know that without our customers, we would not exist. We are continually striving to increase our product range and to improve our services in order to be the true one-stop shop for our valued customers.

We are looking forward to working with you.

The Thermote & Vanhalst families



Watch our  
company movie.



# HOW CAN WE SERVE YOU?



## TVH

### All parts, all makes



Computer-controlled stock management  
> 500 000 m<sup>2</sup> of warehousing



One-stop shop  
> 750 000 stock items



Webshop & online support  
> 37 000 000 known references



Technically skilled employees  
Assistance in 37 languages  
64 nationalities



65 parts branches worldwide  
Happy customers in over 170 countries  
Same-day shipment, next-day delivery



## Quality is our priority

Is quality also a priority in your business? Rely on TVH as your partner.

In-depth product knowledge and specific testing equipment allows us to continuously improve processes and quality standards.



# TVH

## Strong brands, guaranteed quality

TVH is your global one-stop shop for parts and accessories for material handling, industrial and agricultural equipment. Regardless of the make, type and year of construction of your material handling or industrial equipment machine: TVH always has a solution.

Reliable products and services contribute to the day-to-day success of your company. That's why we at TVH choose top quality brands for our maintenance, repair and operation products, just like you do.

In addition, our strong house brands guarantee an excellent range and quality standard for mechanical and hydraulic attachments, internal transport equipment, battery chargers and accessories ...



**TOTAL SOURCE**

**CAM**  
attachments

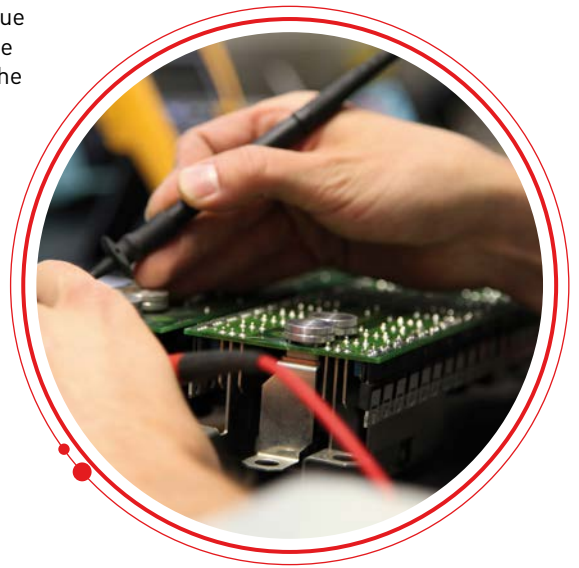
**ENERGIC Plus**



## What can you expect more?

Our offer of **reconditioned parts** is unique in the market. Our technicians follow the strictest quality procedures to finalise the reconditioning. After extensive testing, the parts are then placed in stock.

We also repair **electronic parts** in our high-tech electronic department. Our range includes printed circuit boards, electronic speed controllers, displays, chargers, contactors, joysticks, accelerators and directional switches.



Discover our outlet store with new and second-hand products at rock-bottom prices.

Go to [www.tvh.com/tvhbay](http://www.tvh.com/tvhbay)



**Visit our webshop whenever and wherever you want.**

Request your login details now and benefit from the many advantages offered in MyTotalSource!



Discover the possibilities of the **MyTotalSource app**.

The MyTotalSource app offers you the possibility to request offers, place orders and scan bar codes of references from your smartphone.

**For any questions, call or mail our help desk for free support:**

**T +32 56 43 48 66**  
**[ecommerce@tvh.com](mailto:ecommerce@tvh.com)**

# www.tvh.com

## TVH EQUIPMENT

### Second-hand equipment & Electric warehousing



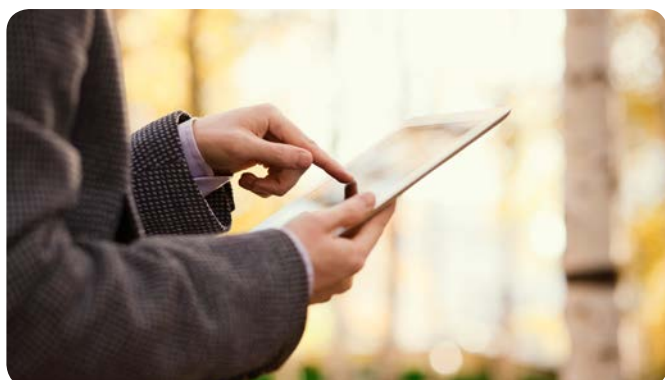
- 600 lift trucks in stock
- 300 mobile elevating work platforms
- Telehandlers and all-terrain trucks
- Masts and attachments

Go to [www.tvh-used-equipment.com](http://www.tvh-used-equipment.com)





# STAY TUNED



**DOWNLOAD CATALOGUES &  
WATCH PRODUCT MOVIES**

[www.tvh.com/downloads](http://www.tvh.com/downloads)



**SUBSCRIBE TO OUR NEWSLETTER**

[www.tvh.com/newsletter](http://www.tvh.com/newsletter)



**READ BLOG POSTS WITH TIPS & TRICKS**

[www.tvh.com/blog](http://www.tvh.com/blog)



**FOLLOW US ON SOCIAL MEDIA**





<b>About TVH</b> .....	<b>I</b>
<b>Nice to know</b> .....	<b>1</b>
<b>Forklift &amp; turf seats</b> .....	<b>7</b>
· Product line MAXIMO .....	8
· Product line PRIMO .....	11
· Product line MSG 20 .....	20
· Product line B 12 .....	22
<b>Construction seats</b> .....	<b>23</b>
· Product line ACTIMO .....	24
<b>Agricultural seats</b> .....	<b>31</b>
· Product line MAXIMO .....	32
· Product line COMPACTO/PRIMO Professional .....	41
· Product line UNIVERSO .....	50



NOTES

A series of horizontal dotted lines for writing notes.



**NICE TO KNOW**



## NICE TO KNOW



**TVH offers an extensive range of GRAMMER seats and accessories for material handling, construction and agricultural equipment.**

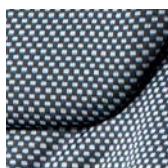
### Why choose Grammer?

- Global market leader and trendsetter for off-road equipment
- Global partner to the vehicle manufacturing industry and represented around the world
- Constantly engaged in the development and production of innovative, flexible solutions to meet challenges in today's competitive global market
- Produces products with superior quality, safety, ergonomics, comfort and value for the users

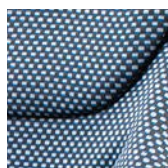
### Colors



Fabric  
anthracite -  
green - silver



Fabric  
anthracite -  
silver



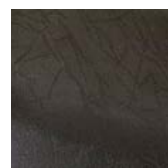
Fabric  
blue - black



Fabric  
yellow - black



PVC  
black

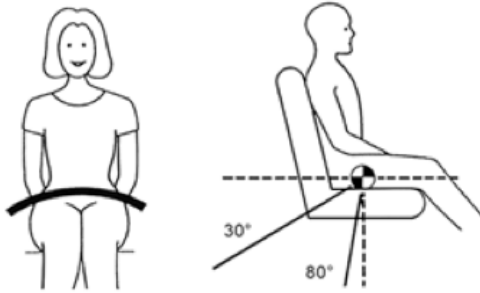


PVC  
imitation leather



## NICE TO KNOW

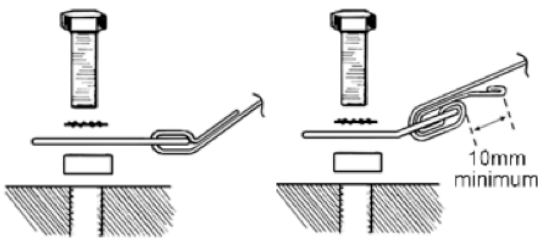
### User's and maintenance instructions of lap belts



#### Correct positioning

The webbing should pass across bone structure i.e. the lap (hips) and the buckle should lie on or just below the hip.

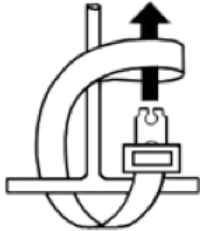
Anchor points should be positioned behind the wearer's hips between 30° and 80° below the height of the hips and at least 35 cm apart.



#### Installation

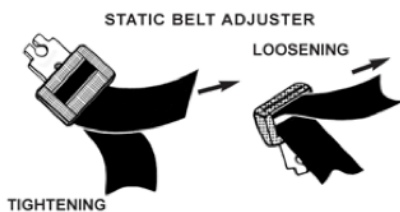
The installation of the seat belt, the quality of its construction and its connection to the vehicle ultimately determine the load that can be absorbed. Wherever possible anchor points provided by the vehicle manufacturer should be used. In the event that these are not available, a level of restraint can be provided by fabricating anchor points on the chassis, seat, or solid metal section of the vehicle.

We recommend reinforcing the structure around the hole created, ensuring there is no serious corrosion, distortion or fracture within 30 cm of the anchor point created. Where the belt is anchored to the seat frame, the frame must be securely attached to the vehicle.



#### Rapid belt (loop fixing)

Loop belt attachment ends should be prevented from moving in excess of 25 mm. This can be achieved by attaching it to an intersection of the frame.



#### Buckle

**FASTENING:** Insert belt tongue into buckle, a positive locking 'click' indicates a secure lock.

**RELEASING:** Press the red release button and the tongue will be released.

#### Adjusters

**TIGHTENING:** Pull free end of webbing through adjuster to obtain the required length.

**LOOSENING:** Tilt adjuster and slide it along webbing until suitable length is reached.



### *Belts with Automatic Locking Retractors (ALR)*

The webbing should be pulled from the retractor in one motion. These units automatically lock after the tongue is engaged in the buckle and a little webbing is retracted.

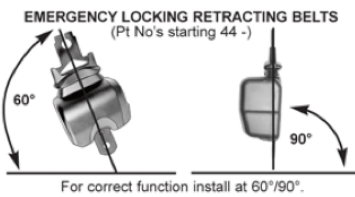
Once the unit has been locked the webbing must be allowed to retract fully before it can once again be pulled out.

To check belts with automatic locking retractors: pull the webbing fully from the retractor, allow a couple of inches to retract - further extraction should not be possible.

### *Belts with Manually Unlocking Retractors (MUR)*

Hold down lever on retractor to allow webbing to release/retract as required.

To check Belts with Manually Unlocking Retractors: when the lever is released it should not be possible to pull out the webbing.



### *Belts with Emergency Locking Retractors (ELR)*

These must be installed & fixed at their intended design angle.

They allow freedom of movement & lock in case of an emergency. To check Belts with Emergency Locking Retractors: tug sharply at webbing and observe that the retractor locks.

## Important

- These instructions should be passed on to the owner / driver.
- A belt is designed to be used by only one person and not around a child seated on a passenger's lap.
- It is important to wear the belt on each journey.
- It is not intended for children under 4 years old unless used with an appropriate restraint.
- The belt should at all times be adjusted and used in accordance with the instructions and should be a snug fit.
- Webbing must not be allowed to chafe against sharp edges.
- Avoid twisting webbing.
- Do not make alterations or additions to the belt. If in doubt consult the manufacturer.
- Belts that have been cut, frayed, damaged or used in an accident should be replaced.
- After an impact the belt & anchor points should be checked.
- To clean use warm soapy water only. Do not use chemical cleaners, bleach or dye.
- Contamination with petrol, grease and acid will be detrimental.
- Static belts should be stowed when not in use, to avoid damage.



A series of horizontal dotted lines for writing notes.



A series of horizontal dotted lines for writing notes.



# FORKLIFT & TURF SEATS



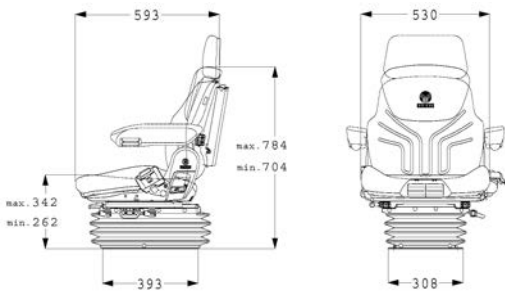
## Product line MAXIMO

The MAXIMO forklift class is designed for big forklift trucks and wheel loaders. The versatility of the added features will convince you. **Working always means sitting.**

### MAXIMO XXL (MSG 95AL/731, MSG95A/731)



- Pneumatic Low-frequency suspension
- Automatic weight adjustment: 50 – 130 kg
- Pneumatic lumbar support
- Adjustable shock absorber for vertical suspension
- Horizontal suspension
- Seat cushion depth and adjustable anglement
- Stepless height adjustment
- Wide seat cushion
- Passive seat climate system
- Integrated backrest extension
- Operator restraint system
- Seat switch
- APS: automatic position system



Seats	Description	REF
Standard version	Fabric (blue-black), climate air compressor 12 V	<a href="#">100BC2356</a>
Alternative version	PVC (black)	<a href="#">100BC2774</a>

Spare parts	Description	REF
Seat cushion	PVC	<a href="#">100BC2215</a>
Backrest cushion	PVC	<a href="#">100BC2216</a>
Cushion kit	PVC, heated	<a href="#">100BC2358</a>
Seat cushion	Fabric	<a href="#">100BC2359</a>
Backrest cushion	Fabric	<a href="#">100BC2360</a>
Backrest extension	Fabric	<a href="#">100BC2367</a>
Cushion kit	Fabric, heated	<a href="#">100BC2361</a>
Slide rails		<a href="#">100BC2250</a>
Switch		<a href="#">100BC2362</a>
Shock absorber	Horizontal	<a href="#">100BC2445</a>
Shock absorber	Vertical	<a href="#">100BC2430</a>
Compressor		<a href="#">100BC2441</a>
Air spring		<a href="#">100BC2433</a>
Complete suspension		<a href="#">100BC2483</a>



Pneumatic suspension



Low-frequency suspension



Pneumatic lumbar support



Fore/aft isolation



Automatic positioning system



Passive seat climate system

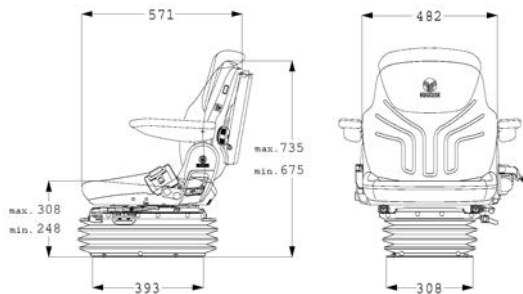


Automatic weight system

Optional features	Description	REF
Head rest	PVC	<a href="#">100BC2249</a>
Armrest	Left-hand, long 380 x 80 mm adjustable angle	<a href="#">100BC2171</a>
Armrest	Right-hand, long 380 x 80 mm adjustable angle	<a href="#">100BC2172</a>
Armrest	Left-hand, 270 x 65 mm adjustable height, folding	<a href="#">100BC2230</a>
Armrest	Right-hand, 270 x 65 mm adjustable height, folding	<a href="#">100BC2231</a>
Document holder		<a href="#">100BC2144</a>

Contact us for additional seat options · Please note that optional features are not included with the seat and must be ordered separately. Please note that the appearance of the seat might differ slightly from the shown example, depending on the selected version and options.

## MAXIMO L (MSG 95A/721 12 V)



- Pneumatic suspension
- Weight adjustment: 50 – 130 kg
- Mechanical lumbar support
- Seat switch
- Stepless height adjustment up to 60 mm
- Operator restraint system
- APS: automatic position system

Seats	Description	REF
Standard version	Fabric (blue-black)	<a href="#">100BC2363</a>
Alternative version	PVC (black)	<a href="#">100BC2775</a>

Spare parts	Description	REF
Seat cushion	PVC	<a href="#">100BC2241</a>
Backrest cushion	PVC	<a href="#">100BC2242</a>
Cushion set	PVC, heated 12 V	<a href="#">100BC2228</a>
Seat cushion	Fabric	<a href="#">100BC2365</a>
Backrest cushion	Fabric	<a href="#">100BC2366</a>
Cushion set	Fabric, heated 12 V	<a href="#">100BC2368</a>
Slide rails		<a href="#">100BC2250</a>
Switch		<a href="#">100BC2362</a>
Shock absorber	Horizontal	<a href="#">100BC2445</a>
Shock absorber	Vertical	<a href="#">100BC2430</a>
Compressor		<a href="#">100BC2441</a>
Air spring		<a href="#">100BC2433</a>
Complete suspension		<a href="#">100BC2484</a>



Pneumatic suspension



Automatic weight system



Mechanical lumbar support



Fore/aft isolation



Automatic positioning system

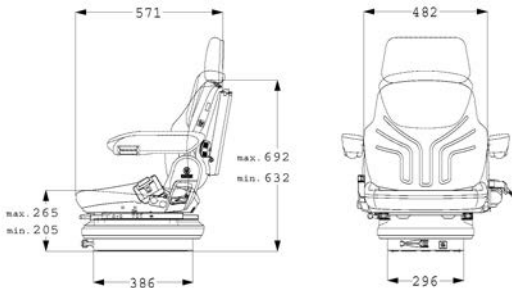
Optional features	Description	REF
Head rest	PVC	<a href="#">100BC2249</a>
Backrest extension	Fabric	<a href="#">100BC2367</a>
Armrest	Left-hand, long 380 x 80 mm adjustable angle	<a href="#">100BC2171</a>
Armrest	Right-hand, long 380 x 80 mm adjustable angle	<a href="#">100BC2172</a>
Armrest	Left-hand, 270 x 65 mm height adjustable height, folding	<a href="#">100BC2230</a>
Armrest	Right-hand, 270 x 65 mm height adjustable height, folding	<a href="#">100BC2231</a>
Document holder		<a href="#">100BC2144</a>



## MAXIMO M (MSG 85/721)



- Mechanical suspension
- Weight and height adjustable
- Mechanical lumbar support
- Narrow seat cushion
- Seat switch
- Backrest adjustable anglement
- Operator restraint system



Mechanical suspension



Mechanical lumbar support



Manual weight adjustment

Seats	Description	REF
Standard version	PVC (black)	<a href="#">100BC2369</a>
Alternative version	Fabric (blue-black)	<a href="#">100BC2371</a>

Spare parts	Description	REF
Seat cushion	PVC	<a href="#">100BC2241</a>
Backrest cushion	PVC	<a href="#">100BC2216</a>
Seat cushion	PVC, heated 12 V	<a href="#">100BC2373</a>
Backrest cushion	PVC, heated 12 V	<a href="#">100BC2374</a>
Cushion set	PVC, heated 12 V	<a href="#">100BC2248</a>
Seat cushion	Fabric	<a href="#">100BC2365</a>
Backrest cushion	Fabric	<a href="#">100BC2366</a>
Cushion set	Fabric, 24 V	<a href="#">100BC2375</a>
Slide rails		<a href="#">100BC2257</a>
Switch		<a href="#">100BC2376</a>
Shock absorber	Vertical	<a href="#">100BC2485</a>
Roller kit		<a href="#">100BC2486</a>
Complete suspension		<a href="#">100BC2487</a>

Optional features	Description	REF
Head rest	PVC	<a href="#">100BC2249</a>
Backrest extension	Fabric	<a href="#">100BC2367</a>
Armrest	Left-hand, long 380 x 80 mm adjustable angle	<a href="#">100BC2171</a>
Armrest	Right-hand, long 380 x 80 mm adjustable angle	<a href="#">100BC2172</a>
Armrest	Left-hand, 270 x 65 mm height adjustable height, folding	<a href="#">100BC2230</a>
Armrest	Right-hand, 270 x 65 mm height adjustable height, folding	<a href="#">100BC2231</a>
Document holder		<a href="#">100BC2144</a>

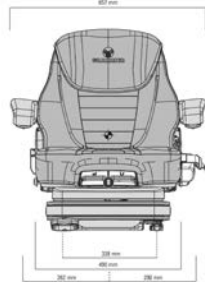
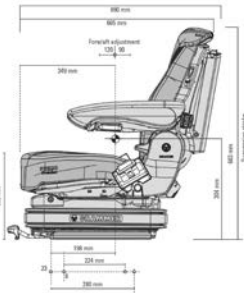
## Product line PRIMO

A new dimension of suspension comfort, all while keeping a low profile. With the new PRIMO product family, GRAMMER presents an innovative seating concept that offers unequalled opportunities. **Seating comfort in new dimensions.** More than 1 million satisfied drivers on a MSG65/MSG75.

### PRIMO EVOLUTION (MSG75EL/721)



- Pneumatic low-frequency suspension
- Automatic weight adjustment: 45 kg – 170 kg
- Pneumatic lumbar support
- Active seat climate system
- Seat cushion width of 490 mm
- Seat cushion depth and length adjustment
- Heating
- Adjustable backrest height
- Retractable back extension
- Suspension stroke: 110 mm



Seats	Description	REF
Standard version	Fabric (anthracite-silver), duo belt 12 V	<a href="#">100BC2509</a>

Spare parts	Description	REF
Seat cushion	Fabric	<a href="#">100BC2511</a>
Backrest cushion	Fabric	<a href="#">100BC2512</a>
Backrest extension	Fabric	<a href="#">100BC2513</a>
Slide rails		<a href="#">100BC2514</a>
Fore/aft isolation		<a href="#">100BC2515</a>
Switch		<a href="#">100BC2516</a>
Shock absorber	Vertical	<a href="#">100BC2465</a>
Compressor	12 V	<a href="#">100BC2466</a>
Air spring		<a href="#">100BC2467</a>



Pneumatic suspension



Low-frequency suspension



Pneumatic lumbar support



Passive seat climate system



Automatic weight system

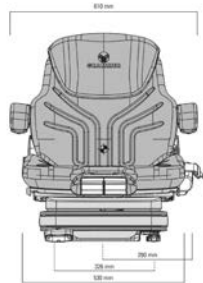
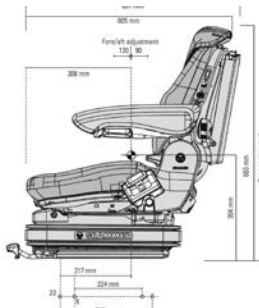
Optional features	Description	REF
Armrest	Left-hand, 380 x 80 mm	<a href="#">100BC2518</a>
Armrest	Right-hand, 380 x 80 mm	<a href="#">100BC2517</a>
Seat belt	Dual, switch, ELR	<a href="#">100BC2519</a>
Document holder		<a href="#">100BC2144</a>



## PRIMO EL PLUS (MSG75EL/731)



- Pneumatic low-frequency suspension
- Automatic weight adjustment: 45 – 170 kg
- Passive seat climate system
- Seat shell width: 530 mm
- Mechanical lumbar support
- Heating
- Adjustable backrest height
- Integrated restraint system
- Suspension stroke: 110 mm



Seats	Description	REF
Standard version	Fabric (anthracite-silver), switch 22 ohm	<a href="#">100BC2520</a>

Spare parts	Description	REF
Seat cushion	PVC	<a href="#">100BC2215</a>
Seat cushion	PVC, heated 12 V	<a href="#">100BC2522</a>
Backrest cushion	PVC	<a href="#">100BC2216</a>
Backrest cushion	PVC, heated 12 V	<a href="#">100BC2374</a>
Seat cushion	Fabric, heated 12 V	<a href="#">100BC2523</a>
Backrest cushion	Fabric, heated 12 V	<a href="#">100BC2524</a>
Slide rails		<a href="#">100BC2514</a>
Fore/aft isolation		<a href="#">100BC2515</a>
Switch		<a href="#">100BC2516</a>
Shock absorber	Vertical	<a href="#">100BC2465</a>
Compressor	12 V	<a href="#">100BC2466</a>
Air spring		<a href="#">100BC2467</a>
Complete suspension		<a href="#">100BC2525</a>



Pneumatic suspension



Low-frequency suspension



Mechanical lumbar support



Active seat climate system



Automatic weight system

Optional features	Description	REF
Head rest	PVC	<a href="#">100BC2249</a>
Backrest extension	Fabric	<a href="#">100BC2367</a>
Armrest	Left-hand, 380 x 80 mm, adjustable angle	<a href="#">100BC2211</a>
Armrest	Right-hand, 380 x 80 mm, adjustable angle	<a href="#">100BC2212</a>
Document holder		<a href="#">100BC2144</a>

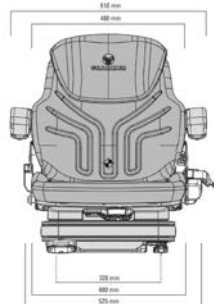
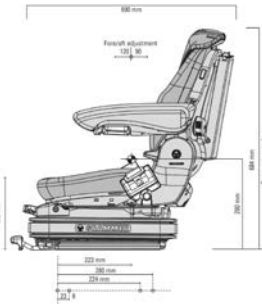
## PRIMO XL PLUS (MSG75G/721)



- Pneumatic suspension
- 12 V compressor
- Automatic weight adjustment: 45 – 170 kg
- Seat cushion width: 480 mm
- Suspension stroke: 110 mm
- Fore/aft adjustment: 210 mm
- Mechanical lumbar support
- Backrest with adjustable anglement
- Integrated backrest extension

Seats	Description	REF
Standard version	PVC (black), Seat belt duo 12 V	<a href="#">100BC2526</a>

Spare parts	Description	REF
Seat cushion	PVC	<a href="#">100BC2241</a>
Seat cushion	PVC, heated 12 V	<a href="#">100BC2373</a>
Backrest cushion	PVC	<a href="#">100BC2216</a>
Backrest cushion	PVC, heated 12 V	<a href="#">100BC2374</a>
Seat cushion	Fabric	<a href="#">100BC2554</a>
Seat cushion	Fabric, matrix, heated 12 V	<a href="#">100BC2555</a>
Backrest cushion	Fabric	<a href="#">100BC2556</a>
Backrest cushion	Fabric, matrix, heated 12 V	<a href="#">100BC2557</a>
Cable set	Heating 12 V	<a href="#">100BC2560</a>
Slide rails		<a href="#">100BC2514</a>
Fore/aft isolation		<a href="#">100BC2515</a>
Switch		<a href="#">100BC2516</a>
Shock absorber	Vertical	<a href="#">100BC2465</a>
Compressor	12 V	<a href="#">100BC2466</a>
Air spring		<a href="#">100BC2467</a>



Pneumatic suspension



Manual weight adjustment

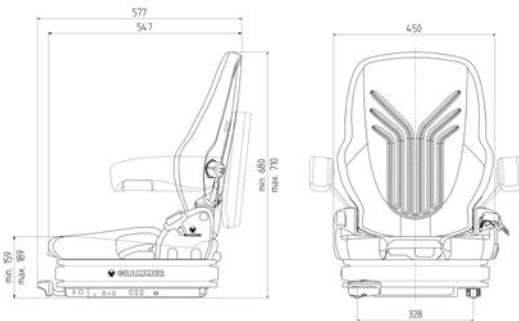


Mechanical lumbar support

Optional features	Description	REF
Head rest	PVC	<a href="#">100BC2249</a>
Head rest	Fabric	<a href="#">100BC2558</a>
Armrest	Left-hand, 380 x 80 mm, adjustable angle	<a href="#">100BC2211</a>
Armrest	Right-hand, 380 x 80 mm, adjustable angle	<a href="#">100BC2212</a>
Armrest	Left-hand, 320 x 60 mm	<a href="#">100BC2562</a>
Armrest	Right-hand, 320 x 60 mm	<a href="#">100BC2561</a>
Armrest	Left-hand, 270 x 65 mm height adjustable height, folding	<a href="#">100BC2230</a>
Armrest	Right-hand, 270 x 65 mm height adjustable height, folding	<a href="#">100BC2231</a>
Seat belt	Dual, switch, ELR	<a href="#">100BC2519</a>
Document holder		<a href="#">100BC2144</a>



## PRIMO XXL (MSG75G/522)



- Pneumatic low-frequency suspension
- 12 V compressor
- Automatic weight adjustment: 45 – 170 kg
- Seat cushion width: 450 mm
- Suspension stroke: 110 mm
- Fore/aft adjustment: 210 mm
- Backrest with adjustable anglement
- Mechanical lumbar support
- Integrated backrest extension

Seats	Description	REF
Standard version	Fabric (blue-black), low-frequency 12 V	<a href="#">100BC2563</a>

Spare parts	Description	REF
Seat cushion	PVC, heated 12 V	<a href="#">100BC2271</a>
Seat cushion	PVC, heated 48 V	<a href="#">100BC2565</a>
Backrest cushion	PVC, 12 V	<a href="#">100BC2566</a>
Backrest cushion	PVC, matrix, heated 48 V	<a href="#">100BC2567</a>
Seat cushion	Fabric	<a href="#">100BC2568</a>
Seat cushion	Fabric, heated 12 V	<a href="#">100BC2569</a>
Seat cushion	Fabric, matrix, heated 48 V	<a href="#">100BC2570</a>
Backrest cushion	Fabric	<a href="#">100BC2571</a>
Backrest cushion	Fabric, heated 12 V	<a href="#">100BC2572</a>
Backrest cushion	Fabric, matrix, heated 48 V	<a href="#">100BC2573</a>
Cable set	Heating 12 V	<a href="#">100BC2464</a>
Cable set	Heating 24 V	<a href="#">100BC2575</a>
Cable heating set	48 V	<a href="#">100BC2576</a>
Slide rails		<a href="#">100BC2462</a>
Fore/aft isolation		<a href="#">100BC2472</a>
Switch		<a href="#">100BC2577</a>
Shock absorber	Vertical	<a href="#">100BC2465</a>
Compressor	12 V	<a href="#">100BC2466</a>
Air spring		<a href="#">100BC2467</a>



Pneumatic suspension



Manual weight adjustment



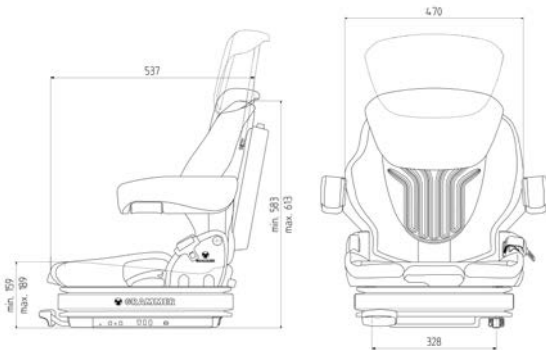
Mechanical lumbar support



Low-frequency suspension

Optional features	Description	REF
Backrest extension	Fabric	<a href="#">100BC2574</a>
Armrest	Left-hand, 320 x 60 mm	<a href="#">100BC2578</a>
Armrest	Right-hand, 60 x 320 mm	<a href="#">100BC2278</a>
Seat belt	Retractor with switch right ELR	<a href="#">100BC2471</a>
Document holder		<a href="#">100BC2144</a>

## PRIMO XL (MSG75G(L)/521)



Pneumatic suspension



Manual weight adjustment



Mechanical lumbar support



Low-frequency suspension

- Pneumatic low-frequency suspension
- 12 V compressor (24 V for forklift trucks and compact construction machines)
- Automatic weight adjustment: 45 – 170 kg
- Seat cushion width: 470 mm
- Suspension stroke: 110 mm
- Fore/aft adjustment: 210 mm
- Backrest with adjustable anglement
- Mechanical lumbar support
- Integrated backrest extension

Seats	Description	REF
Standard version	Fabric (anthracite-silver), suspension, dual belt, height-adjustable backrest extension, 12 V	<a href="#">100BC2579</a>
Alternative version	Fabric (anthracite-silver), suspension, dual belt, height-adjustable backrest extension, 24 V	<a href="#">100BC2581</a>

Spare parts	Description	REF
Seat cushion	PVC, heated 12 V	<a href="#">100BC2583</a>
Seat cushion	PVC, heated 48 V	<a href="#">100BC2584</a>
Backrest cushion	PVC, heated 12/24 V	<a href="#">100BC2273</a>
Backrest cushion	PVC, heated 48 V	<a href="#">100BC2585</a>
Seat cushion	Fabric, heated 12 V	<a href="#">100BC2586</a>
Seat cushion	Fabric	<a href="#">100BC2587</a>
Backrest cushion	Fabric, heated 12 V	<a href="#">100BC2588</a>
Backrest cushion	Fabric, heated 48 V	<a href="#">100BC2589</a>
Cable set	Heating 12 V	<a href="#">100BC2464</a>
Cable set	Heating 24 V	<a href="#">100BC2575</a>
Slide rails		<a href="#">100BC2462</a>
Fore/aft isolation		<a href="#">100BC2472</a>
Switch		<a href="#">100BC2577</a>
Shock absorber	Vertical	<a href="#">100BC2465</a>
Compressor	12 V	<a href="#">100BC2466</a>
Air spring		<a href="#">100BC2467</a>

Optional features	Description	REF
Head rest	Fabric	<a href="#">100BC2590</a>
Head rest	PVC	<a href="#">100BC2249</a>
Armrest	Left-hand, 320 x 60 mm	<a href="#">100BC2578</a>
Armrest	Right-hand, 60 x 320 mm	<a href="#">100BC2278</a>
Document holder		<a href="#">100BC2144</a>

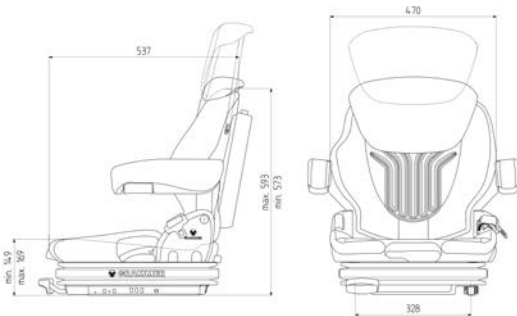


## PRIMO L (MSG75G/521)



- Pneumatic low-frequency suspension
- 12 V compressor (24 V for forklift trucks and compact construction machines)
- Automatic weight adjustment: 45 – 170 kg
- Seat cushion width: 470 mm
- Suspension stroke: 110 mm
- Fore/aft adjustment: 210 mm
- Backrest with adjustable anglement
- Mechanical lumbar support

Seats	Description	REF
Standard version	PVC (black), dual belt 12 V	<a href="#">100BC2591</a>
Alternative version	Fabric (blue-black), dual belt 12 V	<a href="#">100BC2593</a>
Alternative version	Fabric (blue-black), dual belt 24 V	<a href="#">100BC2595</a>



Pneumatic suspension



Manual weight adjustment



Mechanical lumbar support

Spare parts	Description	REF
Seat cushion	PVC, heated 12 V	<a href="#">100BC2583</a>
Backrest cushion	PVC, heated 12 V	<a href="#">100BC2273</a>
Seat cushion	Fabric, heated 12 V	<a href="#">100BC2586</a>
Backrest cushion	Fabric, heated 48 V	<a href="#">100BC2589</a>
Backrest cushion	Fabric, heated 12 V	<a href="#">100BC2588</a>
Cable set	Heating 12 V	<a href="#">100BC2464</a>
Cable set	Heating 24 V	<a href="#">100BC2575</a>
Slide rails		<a href="#">100BC2462</a>
Fore/aft isolation		<a href="#">100BC2472</a>
Switch		<a href="#">100BC2577</a>
Shock absorber	Vertical	<a href="#">100BC2465</a>
Compressor	12 V	<a href="#">100BC2466</a>
Air spring		<a href="#">100BC2467</a>

Optional features	Description	REF
Head rest	PVC	<a href="#">100BC2249</a>
Head rest	Fabric	<a href="#">100BC2590</a>
Armrest	Left-hand, 60 x 320 mm, adjustable angle	<a href="#">100BC2578</a>
Armrest	Right-hand, 60 x 320 mm, adjustable angle	<a href="#">100BC2278</a>
Document holder		<a href="#">100BC2144</a>

Contact us for additional seat options · Please note that optional features are not included with the seat and must be ordered separately. Please note that the appearance of the seat might differ slightly from the shown example, depending on the selected version and options.

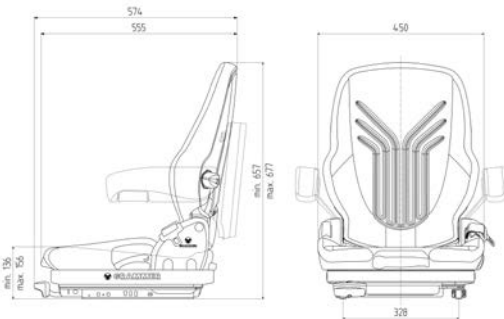


## PRIMO XXM (MSG65/522)



- Mechanical low-frequency suspension
- Automatic weight adjustment: 45 – 170 kg
- Seat cushion width: 450 mm
- Suspension stroke: 80 mm
- Fore/aft adjustment: 210 mm
- Backrest with adjustable anglement
- Mechanical lumbar support
- Integrated operator system

Seats	Description	REF
Standard version	PVC (black), switch, safety belt	<a href="#">100BC2597</a>
Alternative version	Fabric (blue-black), switch, safety belt	<a href="#">100BC2599</a>



Mechanical suspension



Manual weight adjustment



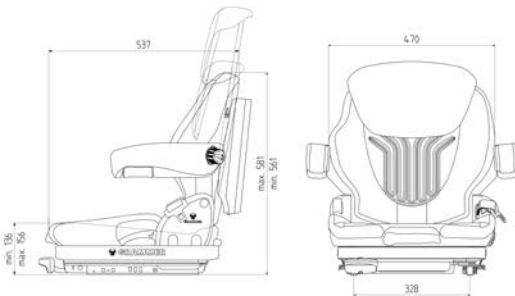
Mechanical lumbar support

Spare parts	Description	REF
Seat cushion	PVC	<a href="#">100BC2270</a>
Seat cushion	PVC, heated 12 V	<a href="#">100BC2271</a>
Seat cushion	PVC, heated 48 V	<a href="#">100BC2565</a>
Backrest cushion	PVC	<a href="#">100BC2601</a>
Backrest cushion	PVC, 12 V	<a href="#">100BC2566</a>
Backrest cushion	Fabric, 48 V	<a href="#">100BC2567</a>
Seat cushion	Fabric	<a href="#">100BC2568</a>
Seat cushion	Fabric, 12 V	<a href="#">100BC2569</a>
Seat cushion	Fabric, matrix, heated 48 V	<a href="#">100BC2570</a>
Backrest cushion	Fabric	<a href="#">100BC2571</a>
Backrest cushion	Fabric, heated 12 V	<a href="#">100BC2572</a>
Backrest cushion	Fabric, matrix, heated 48 V	<a href="#">100BC2573</a>
Cable set	Heating 12 V	<a href="#">100BC2464</a>
Cable set	Heating 24 V	<a href="#">100BC2575</a>
Cable heating set	48 V	<a href="#">100BC2576</a>
Slide rails		<a href="#">100BC2462</a>
Fore/aft isolation		<a href="#">100BC2472</a>
Shock absorber	Vertical	<a href="#">100BC2465</a>

Optional features	Description	REF
Head rest	PVC	<a href="#">100BC2249</a>
Head rest	Fabric	<a href="#">100BC2590</a>
Armrest	Left-hand, 320 x 60 mm	<a href="#">100BC2578</a>
Armrest	Right-hand, 60 x 320 mm	<a href="#">100BC2278</a>
Seat belt	Retractor with switch right ELR	<a href="#">100BC2471</a>
Document holder		<a href="#">100BC2144</a>



## PRIMO XM (MSG65/521)



- Mechanical low-frequency suspension
- Automatic weight adjustment: 45 – 170 kg
- Seat cushion width: 470 mm
- Suspension stroke: 80 mm
- Fore/aft adjustment: 210 mm
- Backrest with adjustable anglement
- Mechanical lumbar support
- Integrated operator system

Seats	Description	REF
Standard version	PVC (black), dual belt	<a href="#">100BC2602</a>
Alternative version	Fabric (blue-black), dual belt	<a href="#">100BC2604</a>

Spare parts	Description	REF
Seat cushion	PVC	<a href="#">100BC2606</a>
Seat cushion	PVC, heated 12 V	<a href="#">100BC2583</a>
Seat cushion	PVC, heated 48 V	<a href="#">100BC2584</a>
Backrest cushion	PVC	<a href="#">100BC2272</a>
Backrest cushion	PVC, heated 12 V	<a href="#">100BC2273</a>
Backrest cushion	PVC, heated 48 V	<a href="#">100BC2585</a>
Seat cushion	Fabric	<a href="#">100BC2587</a>
Seat cushion	Fabric, heated 12 V	<a href="#">100BC2586</a>
Seat cushion	Fabric, matrix, heated 48 V	<a href="#">100BC2607</a>
Backrest cushion	Fabric, heated 48 V	<a href="#">100BC2589</a>
Backrest cushion	Fabric, heated 12 V	<a href="#">100BC2588</a>
Backrest cushion	Fabric, matrix, heated 48 V	<a href="#">100BC2608</a>
Cable set	Heating 12 V	<a href="#">100BC2276</a>
Cable set	Heating 24 V	<a href="#">100BC2609</a>
Cable heating set	48 V	<a href="#">100BC2576</a>
Slide rails		<a href="#">100BC2462</a>
Fore/aft isolation		<a href="#">100BC2472</a>
Switch		<a href="#">100BC2577</a>
Shock absorber	Vertical	<a href="#">100BC2465</a>



Mechanical suspension



Manual weight adjustment



Mechanical lumbar support

Optional features	Description	REF
Head rest	PVC	<a href="#">100BC2249</a>
Head rest	Fabric	<a href="#">100BC2590</a>
Armrest	Left-hand, 60 x 320 mm, adjustable angle	<a href="#">100BC2277</a>
Armrest	Right-hand, 60 x 320 mm, adjustable angle	<a href="#">100BC2278</a>
Seat belt	Retractor, ALR	<a href="#">100BC2145</a>
Document holder		<a href="#">100BC2144</a>

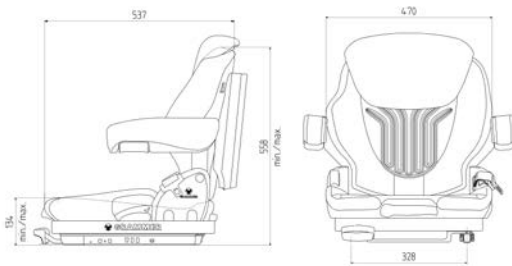
Contact us for additional seat options · Please note that optional features are not included with the seat and must be ordered separately. Please note that the appearance of the seat might differ slightly from the shown example, depending on the selected version and options.



## PRIMO M (MSG65/521)



- Mechanical, low-profile suspension
- Automatic weight adjustment: 45 – 170 kg
- Seat width: 470 mm
- Suspension stroke: 60 mm
- Fore/aft adjustment: 210 mm
- Backrest with angle adjustment
- Mechanical lumbar support



Mechanical suspension



Manual weight adjustment



Mechanical lumbar support

Seats	Description	REF
Standard version	PVC (black), dual belt	<a href="#">100BC2784</a>
Alternative version	Fabric (blue-black), dual belt	<a href="#">100BC2783</a>

Spare parts	Description	REF
Seat cushion	PVC	<a href="#">100BC2606</a>
Seat cushion	PVC, heated 12 V	<a href="#">100BC2583</a>
Seat cushion	PVC, heated 48 V	<a href="#">100BC2584</a>
Backrest cushion	PVC	<a href="#">100BC2272</a>
Backrest cushion	PVC, heated 12 V	<a href="#">100BC2273</a>
Backrest cushion	PVC, heated 48 V	<a href="#">100BC2585</a>
Seat cushion	Fabric	<a href="#">100BC2587</a>
Seat cushion	Fabric, heated 12 V	<a href="#">100BC2586</a>
Seat cushion	Fabric, matrix, heated 48 V	<a href="#">100BC2607</a>
Backrest cushion	Fabric, heated 48 V	<a href="#">100BC2589</a>
Backrest cushion	Fabric, heated 12 V	<a href="#">100BC2588</a>
Backrest cushion	Fabric, matrix, heated 48 V	<a href="#">100BC2608</a>
Cable set	Heating 12 V	<a href="#">100BC2276</a>
Cable set	Heating 24 V	<a href="#">100BC2609</a>
Cable heating set	48 V	<a href="#">100BC2576</a>
Adapter	Seat switch	<a href="#">100BC2610</a>
Slide rails		<a href="#">100BC2462</a>
Fore/aft isolation		<a href="#">100BC2472</a>
Switch		<a href="#">100BC2577</a>
Shock absorber	Vertical	<a href="#">100BC2465</a>

Optional features	Description	REF
Head rest	PVC	<a href="#">100BC2249</a>
Head rest	Fabric	<a href="#">100BC2590</a>
Armrests	Left-hand, 60 x 320 mm, adjustable angle	<a href="#">100BC2277</a>
Armrests	Right-hand, 60 x 320 mm, adjustable angle	<a href="#">100BC2278</a>
Seat belt	Static	<a href="#">100BC2611</a>
Seat belt	Seat belt ELR	<a href="#">100BC2281</a>
Seat belt	Retractor with switch right ELR	<a href="#">100BC2471</a>
Document holder		<a href="#">100BC2144</a>



## Product line MSG 20

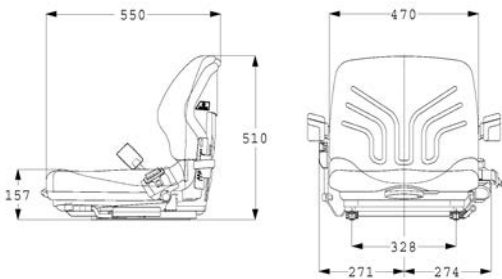
### MSG 20



The MSG 20 is designed to improve the vibration characteristics of the forklift truck and offers every driver a maximum of individual comfort.

- Rapid weight adjustment: 50 – 130 kg
- Backrest adjustable anglement
- Fore/aft adjustment: 150 mm

Seats	Description	REF
Standard version	PVC (black)	<a href="#">100BC2392</a>
Alternative version	PVC (black), seat switch	<a href="#">100BC2396</a>
Alternative version	PVC (black), seat switch, slide rail 210 mm	<a href="#">100BC2398</a>
Alternative version	PVC (black), seat switch, seat belt	<a href="#">100BC2400</a>
Alternative version	Fabric (blue-black), seat switch	<a href="#">100BC2402</a>



Mechanical suspension



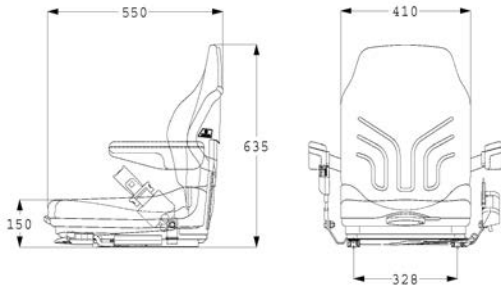
Manual weight adjustment

Spare parts	Description	REF
Seat cushion	PVC	<a href="#">100BC2388</a>
Backrest cushion	PVC	<a href="#">100BC2390</a>
Cushion set	PVC, 12/24 V	<a href="#">100BC2385</a>
Cushion set	PVC, 48 V	<a href="#">100BC2386</a>
Seat cushion	Fabric	<a href="#">100BC2389</a>
Backrest cushion	Fabric	<a href="#">100BC2391</a>
Cushion kit	Fabric 12/24 V	<a href="#">100BC2382</a>
Cushion kit	Fabric, matrix, heated 12/24 V	<a href="#">100BC2488</a>
Cushion kit	Fabric, matrix, heated 48 V	<a href="#">100BC2384</a>
Slide rails		<a href="#">100BC2345</a>
Switch		<a href="#">100BC2404</a>
Shock absorber	Vertical	<a href="#">100BC2489</a>

Optional features	Description	REF
Armrest	Left-hand, 300 x 54 mm, folding	<a href="#">100BC2377</a>
Armrest	Right-hand, 300 x 54 mm, folding	<a href="#">100BC2378</a>
Seat belt	Static	<a href="#">100BC2381</a>
Seat belt	Retractor, MUR	<a href="#">100BC2380</a>
Seat belt	Dual sensitive, ELR	<a href="#">100BC2379</a>
Document holder		<a href="#">100BC2387</a>



## MSG 20 NARROW



The narrow-version MSG 20 is a comfort seat with full suspension, that is especially created for vehicles with limited mounting height and width.

- Rapid weight adjustment: 50 – 130 kg
- Backrest adjustable anglement
- Fore/aft adjustment

Seats	Description	REF
Standard version	PVC (black)	<a href="#">100BC2405</a>
Alternative version	PVC (black), switch	<a href="#">100BC2407</a>
Alternative version	Fabric (blue-black)	<a href="#">100BC2409</a>
Alternative version	Fabric (blue-black), switch	<a href="#">100BC2412</a>

Spare parts	Description	REF
Seat cushion	PVC	<a href="#">100BC2414</a>
Backrest cushion	PVC	<a href="#">100BC2415</a>
Cushion kit	PVC, heated 12/24 V	<a href="#">100BC2416</a>
Cushion kit	PVC, heated 48 V, 450 mm	<a href="#">100BC2417</a>
Seat cushion	Fabric	<a href="#">100BC2418</a>
Backrest cushion	Fabric	<a href="#">100BC2419</a>
Cushion kit	Fabric, matrix, heated 48 V	<a href="#">100BC2384</a>
Slide rails		<a href="#">100BC2345</a>
Switch		<a href="#">100BC2404</a>
Shock absorber	Vertical	<a href="#">100BC2492</a>



Mechanical suspension



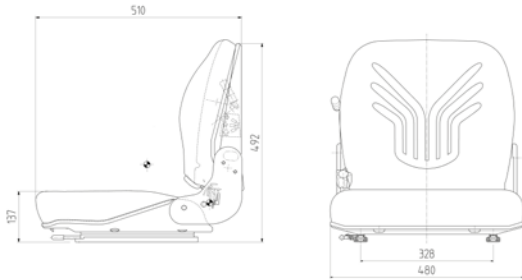
Manual weight adjustment

Optional features	Description	REF
Armrest	Left-hand, 300 x 54 mm, folding	<a href="#">100BC2377</a>
Armrest	Right-hand, 300 x 54 mm, folding	<a href="#">100BC2378</a>
Seat belt	Static	<a href="#">100BC2381</a>
Seat belt	Retractor, MUR	<a href="#">100BC2380</a>
Document holder		<a href="#">100BC2387</a>



## Product line B 12

### B 12



Mechanical suspension



Manual weight adjustment

For vehicles with extremely tight installation dimension tolerances. The new design offers budget-friendly seating comfort. Comfort and safety with a minimal amount of space.

- Weight adjustment: 50 – 120 kg
- Backrest adjustable anglement
- Fore/aft adjustment

Seats	Description	REF
Standard version	PVC (black)	<a href="#">100BC2776</a>
Alternative version	PVC (black), switch	<a href="#">100BC2495</a>
Alternative version	PVC (black), switch, belt	<a href="#">100BC2777</a>

Spare parts	Description	REF
Seat cushion	PVC	<a href="#">100BC2497</a>
Backrest cushion	PVC	<a href="#">100BC2498</a>
Seat cushion	Fabric	<a href="#">100BC2499</a>
Backrest cushion	Fabric	<a href="#">100BC2500</a>
Slide rails		<a href="#">100BC2501</a>
Switch		<a href="#">100BC2502</a>

Optional features	Description	REF
Armrest	Left-hand, 270 x 65 mm, folding	<a href="#">100BC2503</a>
Armrest	Right-hand, 270 x 65 mm, folding	<a href="#">100BC2504</a>
Seat belt	Static, Seat belt	<a href="#">100BC2506</a>
Seat belt	Retractor, MUR	<a href="#">100BC2785</a>
Seat belt	Dual sensitive, ELR	<a href="#">100BC2508</a>
Document holder		<a href="#">100BC2505</a>



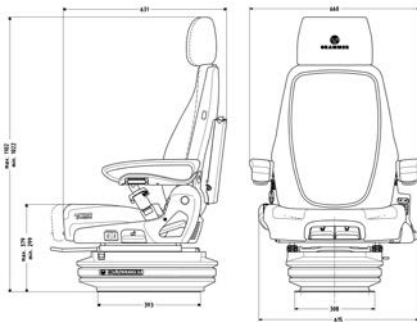
# CONSTRUCTION SEATS



## Product line ACTIMO

The super comfort seat for big machines sets exemplary benchmarks: the extra-high, comfortably formed backrest offers optimal back and side support because of the accentuated side contours. The multiple adjustment possibilities are established through ergonomically sensible, reasoned user guidance to the driver. Because of this user comfort, the individual adjustment to the optimum seat position is easily found. **The perfect foundation for good work.**

### ACTIMO EVOLUTION (MSG 95EL/742, 722 12/24 V)



- Pneumatic low-frequency suspension
- Suspension stroke: 120 mm
- Stepless height adjustment: 80 mm
- Active weight adjustment: 50 – 130 kg
- Active seat climate system
- Fore/aft isolation
- Pneumatic lumbar support
- Backrest adjustable anglement
- Quadruple adjustable damper for vertical suspension
- Length adjustment: 210 mm
- Adjustable seat cushion length and angle
- Heating
- Head rest
- Height- and angle-adjustable armrests with fabric
- Document holder

Seats	Description	REF
Standard version	Fabric (anthracite-silver), laterally operated, air suspension 12 V, including adapter cable 12 V	<a href="#">100BC2612</a>
Standard version	Fabric (anthracite-silver), including adapter cable 24 V	<a href="#">100BC2614</a>
Standard version	Fabric (anthracite-silver), front-operated, air suspension 12 V, including adapter cable 12 V, preparation for control carrier boxes	<a href="#">100BC2616</a>
Standard version	Fabric (anthracite-silver), front-operated, air suspension 24 V, including adapter cable 24 V, preparation for control carrier boxes	<a href="#">100BC2618</a>

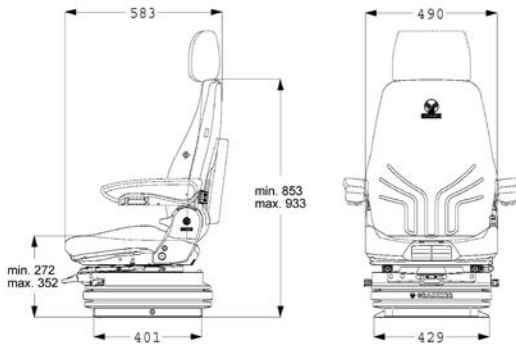


Spare parts	Description	REF
Seat cushion	Fabric	<a href="#">100BC2620</a>
Backrest cushion	Fabric	<a href="#">100BC2621</a>
Backrest extension	Fabric	<a href="#">100BC2622</a>
Armrest	Left-hand	<a href="#">100BC2624</a>
Armrest	Right-hand	<a href="#">100BC2625</a>
Slide rails		<a href="#">100BC2623</a>
Switch	22 ohm	<a href="#">100BC2141</a>

Optional features	Description	REF
Document holder		<a href="#">100BC2144</a>
Control carrier box	Left, with mounting parts	<a href="#">100BC2626</a>
Control carrier box	Right, with mounting parts	<a href="#">100BC2627</a>

- |                              |                            |
|------------------------------|----------------------------|
| Pneumatic suspension         | Fore/aft isolation         |
| Pneumatic lumbar support     | Low-frequency suspension   |
| Automatic positioning system | Active seat climate system |
| Electronic weight system     | Adjustable shock absorber  |

## ACTIMO XXL (MSG 97AL/722)



Control carriers

- Pneumatic suspension
- Fore/aft isolation
- Pneumatic lumbar support
- Passive seat climate system
- Automatic positioning system
- Adjustable shock absorber
- Automatic weight system

- Pneumatic low-frequency suspension
- Suspension stroke: 100 mm
- Stepless height adjustment: 80 mm
- Automatic weight adjustment: 50 – 130 kg
- Passive seat climate system
- Fore/aft isolation
- Pneumatic lumbar support
- Heating
- Adjustable seat cushion length and angle
- Adjustable shock absorber for vertical suspension
- APS: automatic positioning system

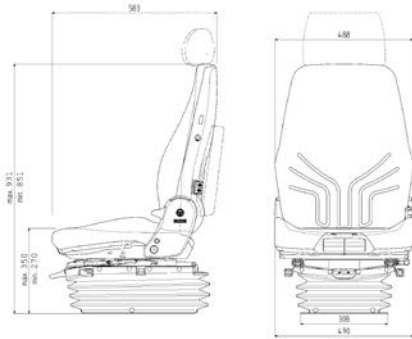
Seats	Description	REF
Standard version	Fabric (yellow-black), air suspension, 24 V compressor, extra-wide, ruggedised suspension, length adjustment: 170 mm	<a href="#">100BC2628</a>

Spare parts	Description	REF
Seat cushion	PVC	<a href="#">100BC2630</a>
Backrest cushion	PVC	<a href="#">100BC2631</a>
Seat cushion	Fabric	<a href="#">100BC2661</a>
Backrest cushion	Fabric	<a href="#">100BC2634</a>
Seat cushion	Fabric, 24 V	<a href="#">100BC2633</a>
Backrest cushion	Fabric, 24 V	<a href="#">100BC2780</a>
Cushion set	Fabric, heated 24 V	<a href="#">100BC2636</a>
Slide rails set		<a href="#">100BC2637</a>
Switch		<a href="#">100BC2182</a>

Optional features	Description	REF
Head rest	PVC	<a href="#">100BC2632</a>
Head rest	With matrix heated, with logo	<a href="#">100BC2635</a>
Armrest	Left-hand, long 380 x 80 mm adjustable angle	<a href="#">100BC2171</a>
Armrest	Right-hand, long 380 x 80 mm adjustable angle	<a href="#">100BC2172</a>
Armrest	Left-hand, 270 x 65 mm height adjustable height, folding	<a href="#">100BC2230</a>
Armrest	Right-hand, 270 x 65 mm height adjustable height, folding	<a href="#">100BC2231</a>
Seat belt	Retractor, ALR	<a href="#">100BC2145</a>
Seat belt	ELR, left-hand	<a href="#">100BC2638</a>
Lateral suspension	Height: 18 mm	<a href="#">100BC2213</a>
Lateral suspension	Reinforced version	<a href="#">100BC2639</a>
Swivel	360°, height: 31 mm	<a href="#">100BC2640</a>
Document holder		<a href="#">100BC2144</a>



## ACTIMO XL (MSG 95A/722)



- Pneumatic suspension
- Suspension stroke: 100 mm
- Stepless height adjustment: 80 mm
- Automatic weight adjustment: 50 – 130 kg
- Passive seat climate system
- Fore/aft isolation
- Pneumatic lumbar support
- Adjustable shock absorber for vertical suspension
- Adjustable seat cushion length and angle
- APS: automatic positioning system

Seats	Description	REF
Standard version	Fabric (yellow-black), narrow suspension (308 mm) 12 V, without low-frequency suspension	<a href="#">100BC2641</a>
Standard version	Fabric (yellow-black), narrow suspension (308 mm) 24 V, without low-frequency suspension	<a href="#">100BC2643</a>

Spare parts	Description	REF
Seat cushion	Fabric	<a href="#">100BC2646</a>
Seat cushion	Fabric, 12 V	<a href="#">100BC2647</a>
Backrest cushion	Fabric	<a href="#">100BC2648</a>
Backrest cushion	Fabric, 12 V	<a href="#">100BC2649</a>
Heating cushion set	24 V	<a href="#">100BC2650</a>
Seat cushion	PVC	<a href="#">100BC2630</a>
Backrest cushion	PVC	<a href="#">100BC2631</a>
Heating	24 V	<a href="#">100BC2651</a>
Heating cable set	12 V	<a href="#">100BC2652</a>
Slide rails		<a href="#">100BC2210</a>
Switch + contact plate	22 ohm	<a href="#">100BC2168</a>



Control carriers

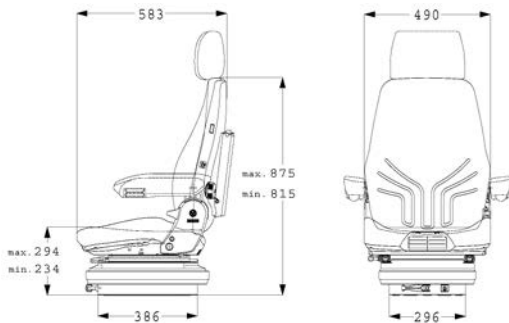
- |  |                              |  |                             |
|--|------------------------------|--|-----------------------------|
|  | Pneumatic suspension         |  | Fore/aft isolation          |
|  | Pneumatic lumbar support     |  | Passive seat climate system |
|  | Automatic positioning system |  | Adjustable shock absorber   |
|  | Automatic weight system      |  |                             |

Optional features	Description	REF
Head rest	Matrix, with logo	<a href="#">100BC2635</a>
Head rest	PVC	<a href="#">100BC2632</a>
Armrest	Left-hand, long 380 x 80 mm adjustable angle	<a href="#">100BC2171</a>
Armrest	Right-hand, long 380 x 80 mm adjustable angle	<a href="#">100BC2172</a>
Armrest	Left-hand, 270 x 65 mm adjustable height, folding	<a href="#">100BC2230</a>
Armrest	Right-hand, 270 x 65 mm adjustable height, folding	<a href="#">100BC2231</a>
Seat belt	Retractor, ALR	<a href="#">100BC2145</a>
Seat belt	ELR, left-hand	<a href="#">100BC2638</a>
Lateral suspension	Height: 18 mm	<a href="#">100BC2213</a>
Lateral suspension	Reinforced version	<a href="#">100BC2639</a>
Swivel	360°, height: 31 mm	<a href="#">100BC2640</a>
Document holder		<a href="#">100BC2144</a>

## ACTIMO M (MSG 85/722)



- Mechanical suspension
- Weight adjustment: 50 – 130 kg
- Suspension stroke: 100 mm
- Mechanical lumbar support
- Height adjustment: 60 mm
- Adjustable seat cushion length and angle



Seats	Description	REF
Standard version	Fabric (yellow-black)	<a href="#">100BC2657</a>
Standard version	PVC (imitation leather)	<a href="#">100BC2659</a>

Spare parts	Description	REF
Seat cushion	Fabric	<a href="#">100BC2661</a>
Seat cushion 550 mm	Fabric	<a href="#">100BC2662</a>
Backrest cushion	Fabric	<a href="#">100BC2634</a>
Seat cushion	Fabric, heated 12 V	<a href="#">100BC2663</a>
Seat cushion	Fabric, heated 12 V, extra wide: 550 mm	<a href="#">100BC2664</a>
Seat cushion	Fabric, heated 24 V, extra wide: 550 mm	<a href="#">100BC2665</a>
Seat cushion	PVC	<a href="#">100BC2630</a>
Backrest cushion	PVC	<a href="#">100BC2631</a>
Slide rails		<a href="#">100BC2250</a>
Switch + contact plate		<a href="#">100BC2258</a>



Control carriers

Optional features	Description	REF
Head rest	PVC	<a href="#">100BC2632</a>
Backrest extension	With matrix heated, with logo	<a href="#">100BC2635</a>
Armrest	Left-hand, long 380 x 80 mm adjustable angle	<a href="#">100BC2171</a>
Armrest	Right-hand, long 380 x 80 mm adjustable angle	<a href="#">100BC2172</a>
Armrest	Left-hand, 270 x 65 mm height adjustable height, folding	<a href="#">100BC2230</a>
Armrest	Right-hand, 270 x 65 mm height adjustable height, folding	<a href="#">100BC2231</a>
Seat belt	Retractor, ALR	<a href="#">100BC2145</a>
Seat belt	ELR, left-hand	<a href="#">100BC2638</a>
Swivel	360°, height: 31 mm	<a href="#">100BC2640</a>
Document holder		<a href="#">100BC2144</a>



Mechanical suspension



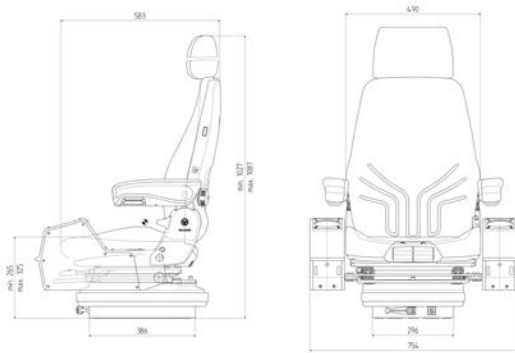
Manual weight system



Mechanical lumbar support



## ACTIMO M WITH CONTROL CARRIER (MSG 85/722)



- Mechanical suspension
- Weight adjustment: 50 – 130 kg
- Mechanical lumbar support
- Height adjustment
- Adjustable seat cushion length and angle
- Folding armrests: 80 x 320 mm
- Head rest

Seats	Description	REF
Standard version	Fabric (yellow-black)	<a href="#">100BC2666</a>
Standard version	PVC (imitation leather)	<a href="#">100BC2668</a>

Spare parts	Description	REF
Seat cushion	Fabric	<a href="#">100BC2661</a>
Seat cushion 550 mm	Fabric	<a href="#">100BC2662</a>
Backrest cushion	Fabric	<a href="#">100BC2634</a>
Seat cushion	Fabric, heated 12 V	<a href="#">100BC2663</a>
Seat cushion	Fabric, heated 12 V, extra wide: 550 mm	<a href="#">100BC2664</a>
Seat cushion	Fabric, heated 24 V, extra wide: 550 mm	<a href="#">100BC2665</a>
Seat cushion	PVC	<a href="#">100BC2630</a>
Backrest cushion	PVC	<a href="#">100BC2631</a>
Slide rails		<a href="#">100BC2250</a>
Switch + contact plate		<a href="#">100BC2258</a>



Optional features	Description	REF
Head rest	PVC	<a href="#">100BC2632</a>
Backrest extension	With matrix heated, with logo	<a href="#">100BC2635</a>
Armrest	Left-hand, long 380 x 80 mm adjustable angle	<a href="#">100BC2171</a>
Armrest	Right-hand, long 380 x 80 mm adjustable angle	<a href="#">100BC2172</a>
Armrest	Left-hand, 270 x 65 mm height adjustable height, folding	<a href="#">100BC2230</a>
Armrest	Right-hand, 270 x 65 mm height adjustable height, folding	<a href="#">100BC2231</a>
Seat belt	Retractor, ALR	<a href="#">100BC2672</a>
Document holder		<a href="#">100BC2144</a>



Mechanical suspension



Manual weight system



Mechanical lumbar support

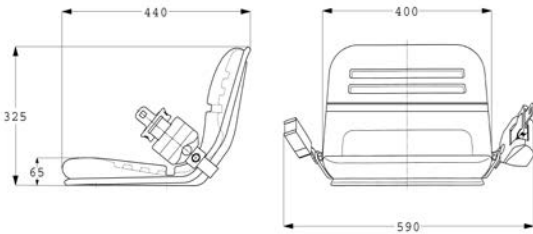
## SEAT SHELL S 44

Seat shell in narrow version with seat climate ducts



Seats	Description	REF
Standard version	PVC (black - imitation leather)	<a href="#">100BC2673</a>
Standard version	Fabric (black)	<a href="#">100BC2674</a>

Optional features	Description	REF
Fore/aft adjustment		<a href="#">100BC2675</a>
Seat belt	Retractor, ALR	<a href="#">100BC2327</a>



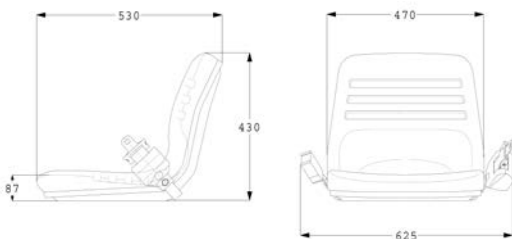
## SEAT SHELL S 38

Seat shell in wide version with seat climate ducts



Seats	Description	REF
Standard version	PVC (black - imitation leather)	<a href="#">100BC2676</a>

Optional features	Description	REF
Fore/aft adjustment		<a href="#">100BC2675</a>
Seat belt	Retractor, ALR	<a href="#">100BC2327</a>





NOTES

A large area of the page filled with horizontal dotted lines, intended for writing notes.



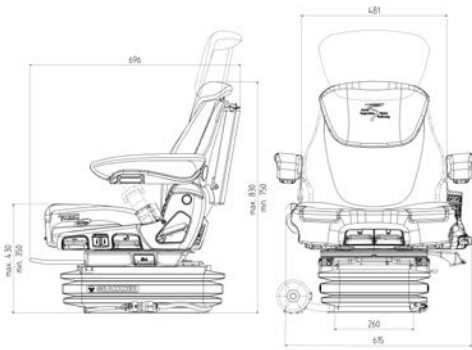
# AGRICULTURAL SEATS



## Product line MAXIMO

Our product line Maximo offers maximum seating comfort for midsized to large tractors. The added features of our Maximo models are no added luxury but offer proven health benefits daily. The ergonomic design of the tapered backrest, the extra wide cushions and armrests combine maximum freedom of movement with safety. Numerous adjustment possibilities help to shape the Maximo seat to your ideal work posture. **Health is worth a maximum of seat comfort.**

### MAXIMO EVOLUTION ACTIVE (MSG 95EAC/741 12 V)



- Air suspension (12 V compressor)
- Electronically and actively controlled suspension system
- Active weight adjustment: 50 - 130 kg
- Stepless height adjustment
- Suspension stroke: 120 mm
- Height adjustment: 80 mm
- Adjustment of damping
- Fore/aft isolation
- Lateral suspension
- Length adjustment: 210 mm
- Adjustable seat cushion depth & angle
- Adjustable backrest angle
- Swivel: 20° left / right
- Integrated backrest extension
- Active seat climate system
- Seat heating
- Seat cushion width: extra wide 550 mm
- Operator presence switch (OPS)
- Height & adjustable angleable armrests with fabric
- Integrated backrest extension
- Pneumatic lumbar support
- Document holder

Seats	Description	REF
Standard version	Fabric (anthracite-silver), switch 22 ohm	<a href="#">100BC2135</a>
Fendt version	Fabric (anthracite-silver), switch diagnostic ability 122/510 ohm	<a href="#">100BC2136</a>

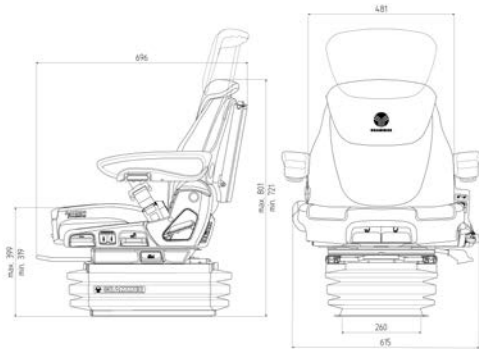
Spare parts	Description	REF
Seat cushion	Fabric	<a href="#">100BC2137</a>
Backrest cushion	Fabric	<a href="#">100BC2138</a>
Backrest extension	Fabric	<a href="#">100BC2139</a>
Armrest	Left-hand	<a href="#">100BC2142</a>
Armrest	Right-hand	<a href="#">100BC2143</a>
Slide rails		<a href="#">100BC2140</a>
Switch	22 ohm	<a href="#">100BC2141</a>
Switch	Fendt version	<a href="#">100BC2778</a>
Shock absorber	Vertical	<a href="#">100BC2430</a>
Shock absorber	Horizontal	<a href="#">100BC2435</a>
Roller kit		<a href="#">100BC2431</a>
Compressor		<a href="#">100BC2432</a>
Air spring		<a href="#">100BC2433</a>
Complete suspension		<a href="#">100BC2434</a>

Optional features	Description	REF
Seat belt	Retractor, ALR	<a href="#">100BC2145</a>
Document holder		<a href="#">100BC2144</a>

	Pneumatic suspension		Active suspension
	Pneumatic lumbar support		Swivel
	Automatic positioning system		Active seat climate system
	Automatic weight system		Automatic shock absorber
	Fore/aft isolation		Lateral suspension

Contact us for additional seat options • Please note that optional features are not included with the seat and must be ordered separately. Please note that the appearance of the seat might differ slightly from the shown example, depending on the selected version and options.

## MAXIMO EVOLUTION DYNAMIC (MSG 95EL/741 12 V)



- Low-frequency air suspension (12 V compressor)
- Active weight adjustment: 50 - 130 kg
- Stepless height adjustment: 80 mm
- Suspension stroke: 120 mm
- Automatic shock absorber
- Fore/aft isolation
- Lateral suspension
- Length adjustment: 210 mm
- Adjustable seat cushion depth & angle
- Adjustable backrest angle
- Swivel: 20° left / right
- Integrated backrest extension
- Active seat seat climate system
- Seat heating
- Seat cushion width: extra wide 550 mm
- Operator presence switch (OPS)
- Height & adjustable angleable armrests with fabric cover
- Integrated backrest extension
- Pneumatic lumbar support
- Document holder

Seats	Description	REF
Standard version	Fabric (anthracite-silver), switch 22 ohm	<a href="#">100BC2154</a>
Same version	Fabric (anthracite-silver), switch diagnostic ability, 3000/1500 ohm	<a href="#">100BC2156</a>
Fendt version	Fabric (anthracite-silver), switch diagnostic ability, 510/122 ohm	<a href="#">100BC2158</a>

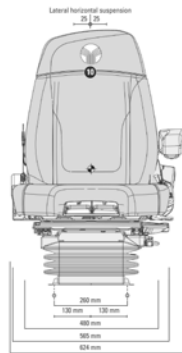
Spare parts	Description	REF
Seat cushion	Fabric	<a href="#">100BC2152</a>
Backrest cushion	Fabric	<a href="#">100BC2160</a>
Backrest extension	Fabric	<a href="#">100BC2139</a>
Armrest	Left-hand	<a href="#">100BC2142</a>
Armrest	Right-hand	<a href="#">100BC2143</a>
Slide rails		<a href="#">100BC2140</a>
Switch	22 ohm	<a href="#">100BC2141</a>
Switch	Fendt version	<a href="#">100BC2778</a>
Switch	510/122 ohm	<a href="#">100BC2779</a>
Shock absorber	Vertical	<a href="#">100BC2430</a>
Shock absorber	Horizontal	<a href="#">100BC2436</a>
Roller kit		<a href="#">100BC2431</a>
Compressor		<a href="#">100BC2432</a>
Air spring		<a href="#">100BC2433</a>
Complete suspension		<a href="#">100BC2437</a>

Optional features	Description	REF
Seat belt	Retractor, ALR	<a href="#">100BC2145</a>
Document holder		<a href="#">100BC2144</a>

- Pneumatic suspension
- Dynamic damping system
- Pneumatic lumbar support
- Swivel
- Automatic positioning system
- Active seat climate system
- Automatic weight system
- Automatic shock absorber
- Fore/aft isolation
- Lateral suspension



## MAXIMO DYNAMIC PLUS



With Dualmotion adaptive back support

- Dynamic dampening air suspension system (12 V compressor)
- Suspension stroke: 120 mm
- Air-assisted height adjustment: 80 mm
- Automatic weight adjustment
- Passive seat climate system
- Fore/aft adjustment: 210 mm
- Fore/aft isolation
- Pneumatic lumbar support
- Adjustable backrest angle
- Adaptive dualmotion back support
- Lateral suspension
- Seat cushion width: extra wide 565 mm
- 2-step seat heating
- Adjustable seat cushion depth & angle
- Dynamic dampening system
- Swivel: 7.5° left / 15° right
- Automatic shock absorber
  - Left: 80 x 380 mm, adjustable angle
  - Right: interface for multifunctional armrest
- APS (Automatic Positioning System)
- Document holder

	Pneumatic suspension		Dynamic damping system
	Pneumatic lumbar support		Swivel
	Automatic positioning system		Passive seat climate system
	Automatic weight system		Automatic shock absorber
	Fore/aft isolation		Lateral suspension
	Dualmotion		

Seats	Description	REF
Standard version	Fabric (anthracite-green-silver)	<a href="#">100BC2162</a>

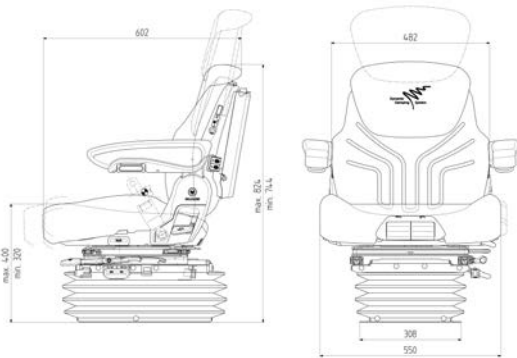
Spare parts	Description	REF
Seat cushion	Fabric	<a href="#">100BC2164</a>
Backrest cushion	Fabric	<a href="#">100BC2165</a>
Backrest extension	Fabric	<a href="#">100BC2166</a>
Armrest	Left-hand, long 380 x 80 mm adjustable angle	<a href="#">100BC2171</a>
Armrest	Right-hand, long 380 x 80 mm adjustable angle	<a href="#">100BC2172</a>
Slide rails		<a href="#">100BC2167</a>
Switch		<a href="#">100BC2182</a>
Switch	22 ohm	<a href="#">100BC2168</a>
Switch	Fendt 510/122 ohm	<a href="#">100BC2169</a>
Switch	Same 300/1500 bzw 2000/500 ohm	<a href="#">100BC2183</a>
Switch	John Deere 3300/1031 ohm	<a href="#">100BC2184</a>
Compensator	Same, John Deere, Fendt switch	<a href="#">100BC2170</a>
Shock absorber	Vertical	<a href="#">100BC2430</a>
Shock absorber	Horizontal	<a href="#">100BC2443</a>
Roller kit		<a href="#">100BC2431</a>
Compressor		<a href="#">100BC2441</a>
Air spring		<a href="#">100BC2433</a>
Complete suspension		<a href="#">100BC2444</a>

Optional features	Description	REF
Seat belt	Static	<a href="#">100BC2786</a>
Seat belt	Retractor, ALR	<a href="#">100BC2145</a>
Document holder		<a href="#">100BC2144</a>

Contact us for additional seat options • Please note that optional features are not included with the seat and must be ordered separately. Please note that the appearance of the seat might differ slightly from the shown example, depending on the selected version and options.



## MAXIMO DYNAMIC (MSG 95AL/741 12 V)



High-comfort seat with dynamic dampening system.

- Dynamic dampening air suspension system (12 V compressor)
- Low-frequency air suspension
- Suspension stroke: 120 mm
- Air-assisted height adjustment: 80 mm
- Passive seat climate system
- Fore/aft adjustment: 210 mm
- Fore/aft isolation
- Pneumatic lumbar support
- Adjustable backrest angle
- Integrated backrest extension
- Horizontal suspension
- Lateral suspension
- Seat cushion width: extra wide 550 mm
- Seat heating
- Adjustable seat cushion length & angle
- Swivel: 20° left / right
- Dynamic dampening system
- Integrated backrest extension
- Armrests
  - Left: 80 x 380 mm, adjustable angle
  - Right: 80 x 380 mm, adjustable angle
- Suspension cover
- Document holder
- Electronically controlled suspension positioning system
- Automatic weight adjustment, delete entry

MODELS WITH AIR SUSPENSION

- |  |                              |  |                             |
|--|------------------------------|--|-----------------------------|
|  | Pneumatic suspension         |  | Dynamic damping system      |
|  | Pneumatic lumbar support     |  | Swivel                      |
|  | Automatic positioning system |  | Automatic shock absorber    |
|  | Automatic weight system      |  | Lateral suspension          |
|  | Fore/aft isolation           |  | Passive seat climate system |

Seats	Description	REF
Standard version	Fabric (anthracite-green-silver)	<a href="#">100BC2176</a>

Spare parts	Description	REF
Seat cushion	Fabric	<a href="#">100BC2178</a>
Backrest cushion	Fabric	<a href="#">100BC2179</a>
Backrest extension	Fabric	<a href="#">100BC2180</a>
Armrest	Left-hand, long 380 x 80 mm adjustable angle	<a href="#">100BC2171</a>
Armrest	Right-hand, long 380 x 80 mm adjustable angle	<a href="#">100BC2172</a>
Slide rails		<a href="#">100BC2181</a>
Switch		<a href="#">100BC2182</a>
Switch	22 ohm	<a href="#">100BC2168</a>
Switch	Fendt 510/122 ohm	<a href="#">100BC2169</a>
Switch	Same 300/1500 bzw 2000/500 ohm	<a href="#">100BC2183</a>
Switch	John Deere 3300/1031 ohm	<a href="#">100BC2184</a>
Compensator	Same, John Deere, Fendt switch	<a href="#">100BC2170</a>
Shock absorber	Vertical	<a href="#">100BC2430</a>
Shock absorber	Horizontal	<a href="#">100BC2443</a>
Roller kit		<a href="#">100BC2431</a>
Compressor		<a href="#">100BC2441</a>
Air spring		<a href="#">100BC2433</a>
Complete suspension		<a href="#">100BC2444</a>

Optional features	Description	REF
Seat belt	Static	<a href="#">100BC2786</a>
Seat belt	Retractor, ALR	<a href="#">100BC2145</a>
Document holder		<a href="#">100BC2144</a>

Contact us for additional seat options • Please note that optional features are not included with the seat and must be ordered separately. Please note that the appearance of the seat might differ slightly from the shown example, depending on the selected version and options.

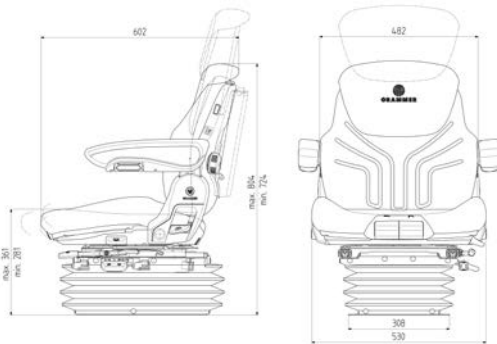


## MAXIMO PROFESSIONAL (MSG 95AL/731 12 V)



High-comfort seat with low-frequency suspension

- Low-frequency air suspension (12 V compressor)
- Suspension stroke: 100 mm
- Automatic weight adjustment
- Air-assisted height adjustment: 80 mm
- Suspension cover
- Swivel: 20° left / right
- Adjustable seat cushion length & angle
- Adjustable Head rest
- Height adjustable and foldable armrests
- Seat cushion width: extra wide 530 mm
- Adjustable shock absorber
- Integrated backrest extension
- Fore/aft isolator



Pneumatic suspension



Low-frequency suspension



Mechanical lumbar support



Swivel



Automatic positioning system



Adjustable shock absorber



Automatic weight system



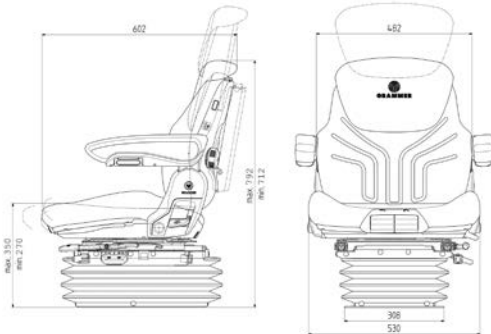
Fore/aft isolation

Seats	Description	REF
Standard version	Fabric (anthracite-green-silver)	<a href="#">100BC2204</a>

Spare parts	Description	REF
Seat cushion	Fabric	<a href="#">100BC2206</a>
Backrest cushion	Fabric	<a href="#">100BC2207</a>
Backrest extension	Fabric, heated 12 V	<a href="#">100BC2208</a>
Armrest	Left-hand, 380 x 80 mm, adjustable angle	<a href="#">100BC2211</a>
Armrest	Right-hand, 380 x 80 mm, adjustable angle	<a href="#">100BC2212</a>
Cushion set	Fabric, heated 12 V	<a href="#">100BC2209</a>
Slide rails		<a href="#">100BC2210</a>
Switch		<a href="#">100BC2182</a>
Shock absorber	Vertical	<a href="#">100BC2430</a>
Shock absorber	Horizontal	<a href="#">100BC2443</a>
Roller kit		<a href="#">100BC2431</a>
Compressor		<a href="#">100BC2441</a>
Air spring		<a href="#">100BC2446</a>
Complete suspension		<a href="#">100BC2447</a>

Optional features	Description	REF
Seat belt	Retractor, ALR	<a href="#">100BC2145</a>
Lateral suspension	Height: 18 mm	<a href="#">100BC2213</a>
Document holder		<a href="#">100BC2144</a>

## MAXIMO COMFORT PLUS (MSG 95A/731 12 V)



Pneumatic suspension



Automatic weight system



Mechanical lumbar support



Fore/aft isolation



Automatic positioning system

Standard seat with automatic positioning system

- Air suspension (12 V compressor)
- Automatic weight adjustment
- APS Automatic Positioning System
- Adjustable seat base cushion
- Backrest adjustable anglement
- Height adjustable and foldable armrests
- Seat cushion width: extra wide 530 mm
- Integrated backrest extension
- Fore/aft isolator

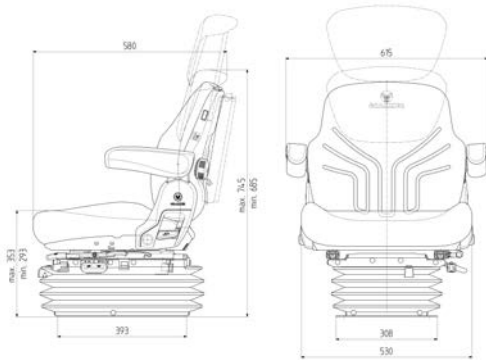
Seats	Description	REF
Standard version	Fabric (anthracite-green-silver)	<a href="#">100BC2202</a>
Standard version	PVC (black)	<a href="#">100BC2219</a>

Spare parts	Description	REF
Seat cushion	Fabric	<a href="#">100BC2206</a>
Backrest cushion	Fabric	<a href="#">100BC2207</a>
Cushion set	Fabric, heated 12 V	<a href="#">100BC2209</a>
Backrest extension	Fabric, heated 12 V	<a href="#">100BC2208</a>
Seat cushion	PVC	<a href="#">100BC2215</a>
Backrest cushion	PVC	<a href="#">100BC2216</a>
Backrest extension	PVC	<a href="#">100BC2217</a>
Cushion set	PVC, heated 12 V	<a href="#">100BC2218</a>
Armrest	Left-hand, 380 x 80 mm, adjustable angle	<a href="#">100BC2211</a>
Armrest	Right-hand, 380 x 80 mm, adjustable angle	<a href="#">100BC2212</a>
Slide rails		<a href="#">100BC2210</a>
Switch		<a href="#">100BC2182</a>
Shock absorber	Vertical	<a href="#">100BC2430</a>
Shock absorber	Horizontal	<a href="#">100BC2443</a>
Roller kit		<a href="#">100BC2431</a>
Compressor		<a href="#">100BC2441</a>
Air spring		<a href="#">100BC2433</a>
Complete suspension		<a href="#">100BC2448</a>

Optional features	Description	REF
Seat belt	Static	<a href="#">100BC2786</a>
Seat belt	Retractor, ALR	<a href="#">100BC2145</a>
Lateral suspension	Height: 18 mm	<a href="#">100BC2213</a>
Document holder		<a href="#">100BC2144</a>



## MAXIMO COMFORT (MSG 95G/731 12 V)



Pneumatic suspension



Manual weight adjustment



Mechanical lumbar support



Fore/aft isolation

Standard seat with pneumatic suspension.

- Air suspension (12 V compressor)
- Manual weight adjustment
- Suspension stroke: 100 mm
- Non-adjustable shock absorber
- Air-assisted height adjustment: 60 mm
- Fore/aft isolation
- Adjustable damper
- Slide rail adjustment: 210 mm
- Mechanical lumbar support
- Backrest adjustable anglement
- Height adjustable and foldable armrests
- Suspension cover
- Seat cushion width: extra wide 520 mm

Seats	Description	REF
Standard version	Fabric (anthracite-green-silver)	<a href="#">100BC2221</a>
Standard version	PVC (black)	<a href="#">100BC2223</a>

Spare parts	Description	REF
Seat cushion	Fabric	<a href="#">100BC2225</a>
Backrest cushion	Fabric	<a href="#">100BC2207</a>
Cushion set	Fabric, heated 12 V	<a href="#">100BC2226</a>
Seat cushion	PVC	<a href="#">100BC2227</a>
Backrest cushion	PVC	<a href="#">100BC2216</a>
Cushion set	PVC, heated 12 V	<a href="#">100BC2228</a>
Armrest	Left-hand, 270 x 65 mm height adjustable height, folding	<a href="#">100BC2230</a>
Armrest	Right-hand, 270 x 65 mm height adjustable height, folding	<a href="#">100BC2231</a>
Slide rails		<a href="#">100BC2210</a>
Switch		<a href="#">100BC2182</a>
Shock absorber	Vertical	<a href="#">100BC2430</a>
Shock absorber	Horizontal	<a href="#">100BC2449</a>
Roller kit		<a href="#">100BC2431</a>
Compressor		<a href="#">100BC2441</a>
Air spring		<a href="#">100BC2433</a>
Complete suspension		<a href="#">100BC2450</a>

Optional features	Description	REF
Backrest extension	Fabric, heated 12 V	<a href="#">100BC2208</a>
Backrest extension	PVC	<a href="#">100BC2229</a>
Seat belt	Retractor, ALR	<a href="#">100BC2145</a>
Seat belt	Duo sensitive, ELR	<a href="#">100BC2232</a>
Lateral suspension	Height: 18 mm	<a href="#">100BC2213</a>
Document holder		<a href="#">100BC2144</a>

## SPECIAL EDITION (MSG 95G/721 12 V)



- Air suspension
- Manual weight adjustment: 50 - 130 kg
- Suspension stroke: 100 mm
- Air supported stepless height adjustment: 80 mm
- Manual weight adjustment
- Fore/aft isolation
- Slide rail adjustment: 210 mm
- Mechanical lumbar support
- Backrest adjustable anglement
- Height adjustable and foldable armrests: 65 x 270 mm
- Seat cushion width: 480 mm

Seats	Description	REF
Standard version	Fabric (anthracite-green-silver) (with armrests)	<a href="#">100BC2233</a>
Standard version	PVC (black) (with armrests)	<a href="#">100BC2235</a>



Pneumatic suspension



Manual weight adjustment



Mechanical lumbar support



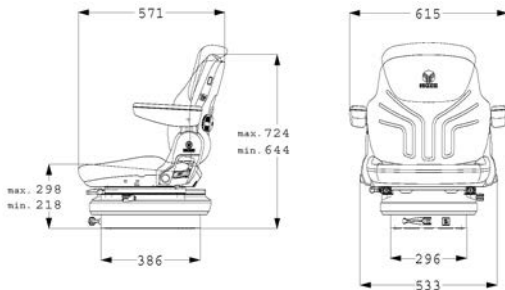
Fore/aft isolation

Spare parts	Description	REF
Seat cushion	Fabric	<a href="#">100BC2236</a>
Backrest cushion	Fabric	<a href="#">100BC2237</a>
Cushion set	Fabric, heated 12 V	<a href="#">100BC2239</a>
Backrest extension	Fabric	<a href="#">100BC2240</a>
Seat cushion	PVC	<a href="#">100BC2241</a>
Backrest cushion	PVC	<a href="#">100BC2242</a>
Armrest	Left-hand, 270 x 65 mm height adjustable height, folding	<a href="#">100BC2230</a>
Armrest	Right-hand, 270 x 65 mm height adjustable height, folding	<a href="#">100BC2231</a>
Slide rails		<a href="#">100BC2210</a>
Switch		<a href="#">100BC2182</a>
Shock absorber	Vertical	<a href="#">100BC2430</a>
Shock absorber	Horizontal	<a href="#">100BC2445</a>
Roller kit		<a href="#">100BC2431</a>
Compressor		<a href="#">100BC2441</a>
Air spring		<a href="#">100BC2433</a>
Complete suspension		<a href="#">100BC2450</a>

Optional features	Description	REF
Seat belt	Retractor, ALR	<a href="#">100BC2145</a>
Seat belt	Duo sensitive, ELR	<a href="#">100BC2232</a>
Lateral suspension	Height: 18 mm	<a href="#">100BC2213</a>
Document holder		<a href="#">100BC2144</a>



## MAXIMO BASIC (MSG 85/721)



Mechanical suspension



Manual weight adjustment



Mechanical lumbar support



Fore/aft isolation

Standard seat with mechanical suspension

- Mechanical suspension
- Suspension stroke: 100 mm
- Shock absorber
- Adjustable backrest angle
- Height adjustment: 80 mm
- Manual weight adjustment
- Fore/aft adjustment: 210 mm
- Backrest adjustable anglement
- Armrests: 65 x 270 mm

Seats	Description	REF
Standard version	Fabric (anthracite-green-silver) (with arm rests)	<a href="#">100BC2244</a>
Standard version	PVC (with armrests, with belt)	<a href="#">100BC2764</a>

Spare parts	Description	REF
Seat cushion	Fabric	<a href="#">100BC2246</a>
Backrest cushion	Fabric	<a href="#">100BC2207</a>
Cushion set	Fabric, heated 12 V	<a href="#">100BC2247</a>
Seat cushion	PVC	<a href="#">100BC2241</a>
Backrest cushion	PVC	<a href="#">100BC2216</a>
Cushion set	PVC, heated 12 V	<a href="#">100BC2248</a>
Armrest	Left-hand, 270 x 65 mm height adjustable height, folding	<a href="#">100BC2230</a>
Armrest	Right-hand, 270 x 65 mm height adjustable height, folding	<a href="#">100BC2231</a>
Slide rails		<a href="#">100BC2250</a>
Switch		<a href="#">100BC2251</a>
Shock absorber	Vertical	<a href="#">100BC2451</a>
Roller kit		<a href="#">100BC2431</a>
Compressor		<a href="#">100BC2441</a>
Complete suspension		<a href="#">100BC2452</a>

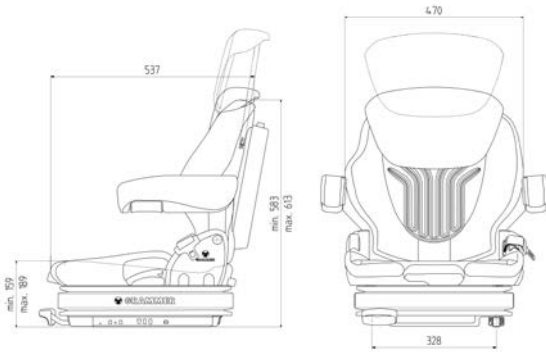
Optional features	Description	REF
Head rest	PVC	<a href="#">100BC2249</a>
Backrest extension	Fabric, heated 12 V	<a href="#">100BC2208</a>
Seat belt	Static	<a href="#">100BC2786</a>
Seat belt	Retractor, ALR	<a href="#">100BC2145</a>
Seat belt	Duo sensitive, ELR	<a href="#">100BC2232</a>
Lateral suspension	Height: 18 mm	<a href="#">100BC2213</a>
Document holder		<a href="#">100BC2144</a>

## Product line COMPACTO/PRIMO Professional

In small tractor models such as vineyard and hopfield vehicles, seat comfort is often overlooked. The Compacto and Primo Professional are tailor-made to solve this, with different cushion widths available. Despite their small dimensions, they all boast standard GRAMMER suspension systems and seat and operating features. **Optimum seating comfort in a minimum of space.**

MODELS WITH AIR SUSPENSION

### PRIMO PROFESSIONAL (MSG75GL/521/511)



- Low-profile, low-frequency suspension (12 V compressor)
- Height adjustment: 60 mm
- Weight adjustment: 45 - 170 kg
- Fore/aft adjustment: 210 mm
- Adjustable backrest angle
- Integrated backrest extension
- Mechanical lumbar support



Pneumatic suspension



Low-frequency suspension



Mechanical lumbar support



Manual weight adjustment

Seats	Description	REF
Standard version	Fabric (anthracite-green-silver), PRIMO Prof M 12 V	<a href="#">100BC2453</a>
Standard version	PVC (black), PRIMO Prof M 12 V	<a href="#">100BC2455</a>
Standard version	Fabric (anthracite-green-silver), PRIMO Prof S 12 V	<a href="#">100BC2457</a>
Standard version	PVC (black) PRIMO Prof S 12 V	<a href="#">100BC2459</a>

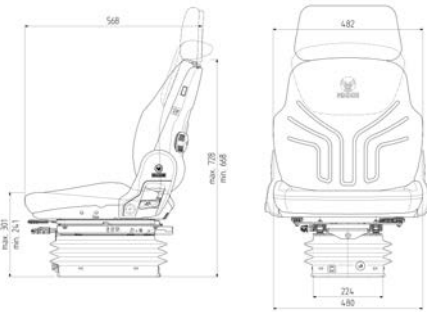
Spare parts	Description	REF
Seat cushion	Fabric, 450 mm for Prof M	<a href="#">100BC2265</a>
Seat cushion	Fabric, 400 mm for Prof S	<a href="#">100BC2287</a>
Seat cushion	Fabric, 450 mm, heated 12 V, for PRIMO Prof M	<a href="#">100BC2788</a>
Seat cushion	Fabric, heated 12 V	<a href="#">100BC2288</a>
Backrest cushion	Fabric, 450 mm for Prof M	<a href="#">100BC2267</a>
Backrest cushion	Fabric, 400 mm for Prof S	<a href="#">100BC2289</a>
Backrest extension	Fabric, heated 12 V	<a href="#">100BC2268</a>
Backrest cushion	Fabric, heated 12 V, 400 mm Prof S	<a href="#">100BC2290</a>
Backrest cushion	Fabric	<a href="#">100BC2269</a>
Seat cushion	PVC, 450 mm, for PRIMO Prof M	<a href="#">100BC2270</a>
Seat cushion	PVC, 400 mm, for PRIMO Prof S	<a href="#">100BC2291</a>
Seat cushion	PVC, heated 12 V, 450 mm for PRIMO Prof M	<a href="#">100BC2271</a>
Seat cushion	PVC, heated 12 V, 400 mm for PRIMO Prof S	<a href="#">100BC2292</a>
Backrest cushion	PVC	<a href="#">100BC2272</a>
Backrest cushion	PVC, 400 mm for PRIMO Prof S	<a href="#">100BC2293</a>
Backrest cushion	PVC, heated 12 V, 450 mm for PRIMO Prof M	<a href="#">100BC2273</a>
Backrest cushion	PVC, heated 12 V, 400 mm for PRIMO Prof S	<a href="#">100BC2294</a>
Backrest extension	PVC	<a href="#">100BC2217</a>
Armrest	Left-hand, 60 x 320 mm, adjustable angle	<a href="#">100BC2277</a>
Armrest	Right-hand, 60 x 320 mm, adjustable angle	<a href="#">100BC2278</a>
Slide rails		<a href="#">100BC2462</a>
Switch		<a href="#">100BC2463</a>
Cable	Heating, 12 V	<a href="#">100BC2464</a>
Shock absorber	Vertical	<a href="#">100BC2465</a>
Compressor	12 V	<a href="#">100BC2466</a>
Air spring		<a href="#">100BC2467</a>

Optional features	Description	REF
Storage net		<a href="#">100BC2469</a>
Seat belt	Static	<a href="#">100BC2295</a>
Seat belt	Seat belt, ELR	<a href="#">100BC2281</a>
Seat belt	Retractor with switch right ELR	<a href="#">100BC2471</a>
Fore/aft isolation		<a href="#">100BC2472</a>
Document holder		<a href="#">100BC2144</a>

Contact us for additional seat options • Please note that optional features are not included with the seat and must be ordered separately. Please note that the appearance of the seat might differ slightly from the shown example, depending on the selected version and options.



## COMPACTO COMFORT W (MSG 93/721 12 V)



- Air suspension (12 V compressor)
- Air-assisted height adjustment
- Weight adjustment: 50 - 130 kg
- Mechanical lumbar support
- Adjustable backrest angle
- Fore/aft isolation
- Seat cushion width: 480 mm

Seats	Description	REF
Standard version	Fabric (anthracite-green-silver)	<a href="#">100BC2252</a>
Standard version	PVC	<a href="#">100BC2254</a>

Spare parts	Description	REF
Seat cushion	Fabric	<a href="#">100BC2246</a>
Backrest cushion	Fabric	<a href="#">100BC2207</a>
Cushion set	Fabric, heated 12 V	<a href="#">100BC2208</a>
Seat cushion	PVC	<a href="#">100BC2241</a>
Backrest cushion	PVC	<a href="#">100BC2216</a>
Cushion set	PVC, heated 12 V	<a href="#">100BC2248</a>
Backrest extension	PVC	<a href="#">100BC2256</a>
Slide rails		<a href="#">100BC2257</a>
Switch		<a href="#">100BC2258</a>
Cable set	Heating 12 V	<a href="#">100BC2768</a>
Shock absorber	Vertical	<a href="#">100BC2473</a>
Compressor		<a href="#">100BC2474</a>
Air spring		<a href="#">100BC2475</a>
Complete suspension		<a href="#">100BC2476</a>



Pneumatic suspension



Manual weight adjustment



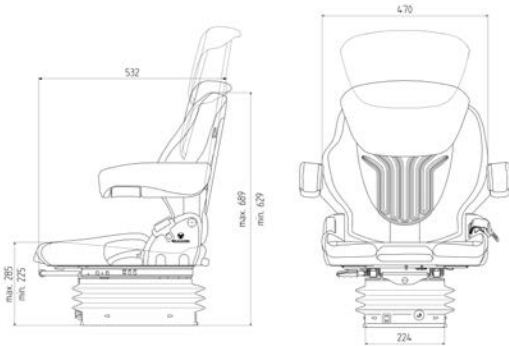
Mechanical lumbar support



Fore/aft isolation

Optional features	Description	REF
Backrest extension	Fabric	<a href="#">100BC2247</a>
Armrest	Left-hand, 380 x 80 mm, adjustable angle	<a href="#">100BC2211</a>
Armrest	Right-hand, 380 x 80 mm, adjustable angle	<a href="#">100BC2212</a>
Armrest	Left-hand, 270 x 65 mm height adjustable height, folding	<a href="#">100BC2230</a>
Armrest	Right-hand, 270 x 65 mm height adjustable height, folding	<a href="#">100BC2231</a>
Seat belt	Static	<a href="#">100BC2786</a>
Seat belt	Retractor, ALR	<a href="#">100BC2145</a>
Lateral suspension		<a href="#">100BC2259</a>
Document holder		<a href="#">100BC2144</a>

## COMPACTO COMFORT M (MSG 93/521 12 V)



Pneumatic suspension



Manual weight adjustment



Mechanical lumbar support

- Air suspension (12 V compressor)
- Air-assisted height adjustment
- Weight adjustment: 50 - 130 kg
- Adjustable backrest angle
- Mechanical lumbar support
- Fore/aft adjustment
- Seat cushion width: 450 mm

Seats	Description	REF
Standard version	Fabric (anthracite-green-silver)	<a href="#">100BC2261</a>
Standard version	PVC (black)	<a href="#">100BC2263</a>

Spare parts	Description	REF
Seat cushion	Fabric	<a href="#">100BC2265</a>
Seat cushion	Fabric, heated 12 V	<a href="#">100BC2266</a>
Backrest cushion	Fabric	<a href="#">100BC2267</a>
Backrest cushion	Fabric, heated 12 V	<a href="#">100BC2269</a>
Seat cushion	PVC	<a href="#">100BC2270</a>
Seat cushion	PVC, heated 12 V	<a href="#">100BC2271</a>
Backrest cushion	PVC	<a href="#">100BC2272</a>
Backrest cushion	PVC, heated 12 V	<a href="#">100BC2273</a>
Slide rail		<a href="#">100BC2274</a>
Switch		<a href="#">100BC2275</a>
Cable set	Heating, 12 V	<a href="#">100BC2276</a>
Shock absorber	Vertical	<a href="#">100BC2473</a>
Compressor		<a href="#">100BC2474</a>
Air spring		<a href="#">100BC2475</a>

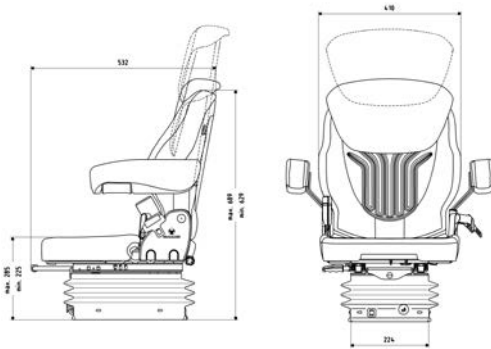
Optional features	Description	REF
Backrest extension	Fabric, heated 12 V	<a href="#">100BC2268</a>
Backrest extension	PVC	<a href="#">100BC2217</a>
Armrest	Left-hand, 60 x 320 mm, adjustable angle	<a href="#">100BC2277</a>
Armrest	Right-hand, 60 x 320 mm, adjustable angle	<a href="#">100BC2278</a>
Armrest	Left-hand, 65 x 270 mm	<a href="#">100BC2279</a>
Armrest	Right-hand, 65 x 270 mm	<a href="#">100BC2280</a>
Seat belt	Seat belt, ELR	<a href="#">100BC2281</a>
Lateral suspension		<a href="#">100BC2282</a>
Document holder		<a href="#">100BC2144</a>



## COMPACTO COMFORT S (MSG 93/511 12 V)



- Air suspension (12 V compressor)
- Air-assisted height adjustment
- Weight adjustment: 50 - 130 kg
- Adjustable backrest angle
- Mechanical lumbar support
- Fore/aft adjustment
- Seat cushion width: 400 mm



**Note:** restricted field of application, only to be fitted on narrow-track tractors with a minimum track width of  $\leq 1150$  mm at the rear wheels.



Pneumatic suspension



Manual weight adjustment



Mechanical lumbar support

Seats	Description	REF
Standard version	Fabric (anthracite-green-silver)	<a href="#">100BC2283</a>
Standard version	PVC (black)	<a href="#">100BC2285</a>

Spare parts	Description	REF
Seat cushion	Fabric	<a href="#">100BC2287</a>
Seat cushion	Fabric, heated 12 V	<a href="#">100BC2288</a>
Backrest cushion	Fabric	<a href="#">100BC2289</a>
Backrest cushion	Fabric, heated 12 V	<a href="#">100BC2290</a>
Backrest cushion	Fabric, heated 12 V	<a href="#">100BC2269</a>
Seat cushion	PVC	<a href="#">100BC2291</a>
Seat cushion	PVC, heated 12 V	<a href="#">100BC2292</a>
Backrest cushion	PVC, heated 12 V	<a href="#">100BC2293</a>
Backrest cushion	PVC, heated 12 V	<a href="#">100BC2294</a>
Slide rail		<a href="#">100BC2274</a>
Switch		<a href="#">100BC2275</a>
Cable set	Heating, 12 V	<a href="#">100BC2276</a>
Shock absorber	Vertical	<a href="#">100BC2473</a>
Compressor		<a href="#">100BC2474</a>
Air spring		<a href="#">100BC2475</a>
Suspension	Upper part	<a href="#">100BC2477</a>
Suspension	Lower part	<a href="#">100BC2478</a>

Optional features	Description	REF
Backrest extension	PVC	<a href="#">100BC2217</a>
Armrest	Left-hand, 60 x 320 mm, adjustable angle	<a href="#">100BC2277</a>
Armrest	Right-hand, 60 x 320 mm, adjustable angle	<a href="#">100BC2278</a>
Armrest	Left-hand, 65 x 270 mm	<a href="#">100BC2279</a>
Armrest	Right-hand, 65 x 270 mm	<a href="#">100BC2280</a>
Seat belt	Static	<a href="#">100BC2295</a>
Seat belt	Seat belt, ELR	<a href="#">100BC2281</a>
Lateral suspension	18 mm	<a href="#">100BC2296</a>
Document holder		<a href="#">100BC2144</a>

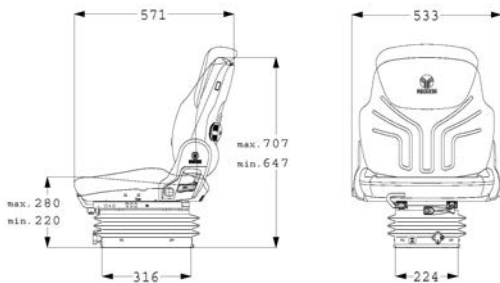
## COMPACTO BASIC W (MSG 83/721)



- Mechanical suspension
- 3-step height adjustment 50 - 130 kg
- Adjustable lumbar support
- Adjustable backrest angle
- Seat cushion width: 480 mm

Seats	Description	REF
Standard version	Fabric (anthracite-green-silver)	<a href="#">100BC2306</a>
Standard version	PVC (black)	<a href="#">100BC2308</a>

Spare parts	Description	REF
Seat cushion	Fabric	<a href="#">100BC2246</a>
Backrest cushion	Fabric	<a href="#">100BC2207</a>
Backrest extension	Fabric, heated 12 V	<a href="#">100BC2208</a>
Cushion set	Fabric, heated 12 V	<a href="#">100BC2310</a>
Seat cushion	PVC	<a href="#">100BC2241</a>
Backrest cushion	PVC	<a href="#">100BC2216</a>
Head rest	PVC	<a href="#">100BC2256</a>
Cushion set	PVC, heated 12 V	<a href="#">100BC2248</a>
Slide rail		<a href="#">100BC2311</a>
Switch		<a href="#">100BC2258</a>
Shock absorber	Vertical	<a href="#">100BC2473</a>
Complete suspension		<a href="#">100BC2480</a>



Mechanical suspension



Manual weight adjustment



Mechanical lumbar support

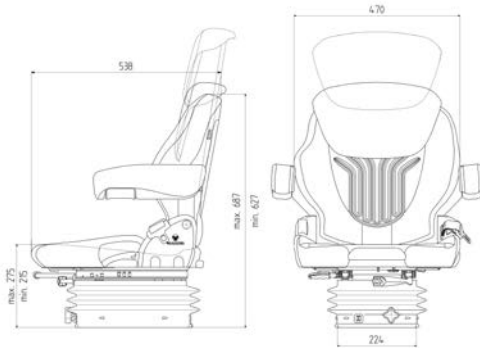
Optional features	Description	REF
Armrest	Left-hand, 380 x 80 mm, adjustable angle	<a href="#">100BC2211</a>
Armrest	Right-hand, 380 x 80 mm, adjustable angle	<a href="#">100BC2212</a>
Armrest	Left-hand, 270 x 65 mm height adjustable height, folding	<a href="#">100BC2230</a>
Armrest	Right-hand, 270 x 65 mm height adjustable height, folding	<a href="#">100BC2231</a>
Seat belt	Static	<a href="#">100BC2786</a>
Seat belt	Retractor, ALR	<a href="#">100BC2145</a>
Lateral suspension		<a href="#">100BC2259</a>
Document holder		<a href="#">100BC2144</a>



## COMPACTO BASIC M (MSG 83/521)



- Mechanical suspension
- 3-step height adjustment: 50 - 130 kg
- Adjustable lumbar support
- Adjustable backrest angle
- Fore/aft adjustment
- Seat cushion width: 450 mm



Mechanical suspension



Manual weight adjustment



Mechanical lumbar support

Seats	Description	REF
Standard version	Fabric (anthracite-green-silver)	<a href="#">100BC2312</a>
Standard version	PVC (black)	<a href="#">100BC2314</a>

Spare parts	Description	REF
Seat cushion	Fabric	<a href="#">100BC2316</a>
Seat cushion	Fabric, heated 12 V	<a href="#">100BC2317</a>
Backrest cushion	Fabric	<a href="#">100BC2267</a>
Backrest cushion	Fabric, heated 12 V	<a href="#">100BC2269</a>
Seat cushion	PVC	<a href="#">100BC2270</a>
Seat cushion	PVC, heated 12 V	<a href="#">100BC2271</a>
Backrest cushion	PVC	<a href="#">100BC2272</a>
Backrest cushion	PVC, heated 12 V	<a href="#">100BC2273</a>
Slide rail		<a href="#">100BC2274</a>
Switch		<a href="#">100BC2275</a>
Cable set	Heating, 12 V	<a href="#">100BC2276</a>
Adapter	Cable ops	<a href="#">100BC2318</a>
Shock absorber	Vertical	<a href="#">100BC2473</a>
Roller kit		<a href="#">100BC2481</a>
Complete suspension		<a href="#">100BC2480</a>

Optional features	Description	REF
Backrest extension	Fabric, heated 12 V	<a href="#">100BC2268</a>
Head rest	PVC	<a href="#">100BC2249</a>
Armrest	Left-hand, 60 x 320 mm, adjustable angle	<a href="#">100BC2277</a>
Armrest	Right-hand, 60 x 320 mm, adjustable angle	<a href="#">100BC2278</a>
Armrest	Left-hand, 65 x 270 mm	<a href="#">100BC2279</a>
Armrest	Right-hand, 65 x 270 mm	<a href="#">100BC2280</a>
Seat belt	Seat belt, ELR	<a href="#">100BC2281</a>
Lateral suspension	18 mm	<a href="#">100BC2296</a>
Document holder		<a href="#">100BC2144</a>



## COMPACTO BASIC XM

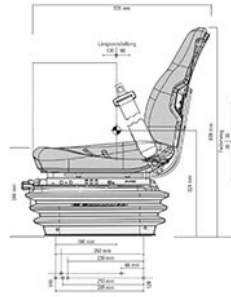
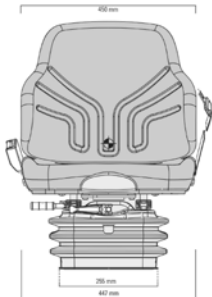


- Mechanical suspension
- Air-assisted height adjustment
- Weight adjustment: 50 - 130 kg
- Additional height limiter
- Suspension stroke: 60 mm

Seats	Description	REF
Standard version	PVC (black)	<a href="#">100BC2297</a>

Spare parts	Description	REF
Seat cushion	PVC	<a href="#">100BC2299</a>
Backrest cushion	PVC	<a href="#">100BC2300</a>
Switch		<a href="#">100BC2301</a>
Seat pan		<a href="#">100BC2302</a>

Optional features	Description	REF
Seat belt	Static	<a href="#">100BC2304</a>
Seat belt	Retractor	<a href="#">100BC2305</a>
Document holder		<a href="#">100BC2303</a>



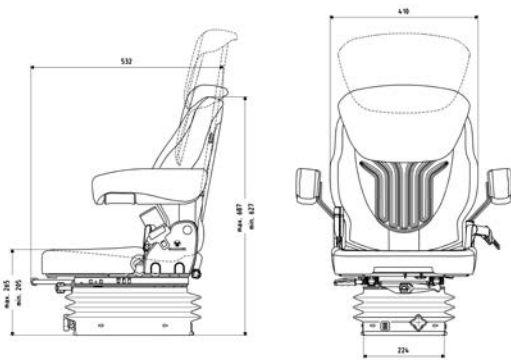
Mechanical suspension



Manual weight adjustment



## COMPACTO BASIC S (MSG 83/511)



**Note:** restricted field of application, only to be fitted on narrow-track tractors with a minimum track width of  $\leq 1150$  mm at the rear wheels.



Mechanical suspension



Manual weight adjustment



Mechanical lumbar support

- Mechanical suspension
- Horizontal suspension
- Suspension stroke: 80 mm
- Infinitely variable height adjustment: 60 mm
- Horizontal adjustment: 180 mm
- Adjustable backrest angle
- Adjustable lumbar support
- Air-assisted automatic weight adjustment: 50 - 130 kg
- Fore/aft adjustment
- Seat cushion width: 400 mm

Seats	Description	REF
Standard version	Fabric (anthracite-green-silver)	<a href="#">100BC2319</a>
Standard version	PVC (black)	<a href="#">100BC2321</a>

Spare parts	Description	REF
Seat cushion	Fabric	<a href="#">100BC2287</a>
Seat cushion	Fabric, heated 12 V	<a href="#">100BC2288</a>
Backrest cushion	Fabric	<a href="#">100BC2289</a>
Backrest cushion	Fabric, heated 12 V	<a href="#">100BC2290</a>
Backrest cushion	Fabric, heated 12 V	<a href="#">100BC2269</a>
Seat cushion	PVC	<a href="#">100BC2291</a>
Seat cushion	PVC, heated 12 V	<a href="#">100BC2292</a>
Backrest cushion	PVC, heated 12 V	<a href="#">100BC2294</a>
Slide rail		<a href="#">100BC2274</a>
Switch		<a href="#">100BC2275</a>
Cable set	Heating, 12 V	<a href="#">100BC2276</a>
Adapter	Cable ops	<a href="#">100BC2318</a>
Shock absorber	Vertical	<a href="#">100BC2473</a>
Roller kit		<a href="#">100BC2481</a>
Complete suspension		<a href="#">100BC2480</a>

Optional features	Description	REF
Backrest extension	PVC	<a href="#">100BC2217</a>
Armrest	Left-hand, 60 x 320 mm, adjustable angle	<a href="#">100BC2277</a>
Armrest	Right-hand, 60 x 320 mm, adjustable angle	<a href="#">100BC2278</a>
Armrest	Left-hand, 65 x 270 mm	<a href="#">100BC2279</a>
Armrest	Right-hand, 65 x 270 mm	<a href="#">100BC2280</a>
Seat belt	Static	<a href="#">100BC2295</a>
Lateral suspension		<a href="#">100BC2282</a>
Document holder		<a href="#">100BC2144</a>



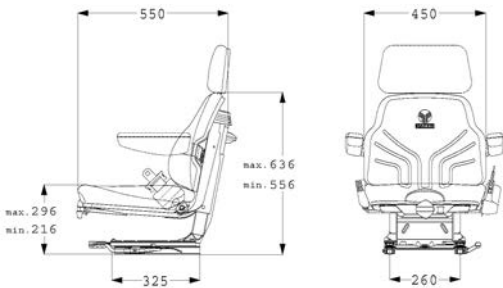
## Product line UNIVERSO

The new Universo has all the features that make sitting a pleasure: a tapered backrest for greater freedom of movement, improved lateral support, an optimum seat cushion angle and multi-function ventilation channels. Furthermore, it is easy to maintain, equipped with replaceable cushions and is available in waterproof imitation leather or heavy-duty fabric. **Suspension so good you don't know it's there.**

### UNIVERSO BASIC PLUS (MSG 44/520)



- Mechanical suspension
- Height adjustment
- Weight adjustment: 50 - 130 kg
- Control levers ergonomically placed
- Lateral suspension
- Fore/aft adjustment
- Fore/aft isolation



Seats	Description	REF
Standard version	Fabric (anthracite-green-silver) (with backrest extension) (with arm rests)	<a href="#">100BC2328</a>
Standard version	PVC (black)	<a href="#">100BC2342</a>

Spare parts	Description	REF
Seat cushion	Fabric	<a href="#">100BC2331</a>
Backrest cushion	Fabric	<a href="#">100BC2332</a>
Backrest extension	Fabric	<a href="#">100BC2333</a>
Seat cushion	PVC	<a href="#">100BC2299</a>
Backrest cushion	PVC	<a href="#">100BC2300</a>
Backrest extension	PVC	<a href="#">100BC2256</a>
Armrest	Left-hand, 54 x 300 mm	<a href="#">100BC2335</a>
Armrest	Right-hand, 54 x 300 mm	<a href="#">100BC2336</a>
Slide rail		<a href="#">100BC2334</a>
Shock absorber	Vertical	<a href="#">100BC2482</a>



Mechanical suspension



Manual weight adjustment



Fore/aft isolation

Optional features	Description	REF
Seat belt	Static	<a href="#">100BC2337</a>
Lap belt	Retractor	<a href="#">100BC2338</a>
Lateral suspension		<a href="#">100BC2339</a>
Option	Vario-cons angular assy for KHD / John Deere	<a href="#">100BC2340</a>
Option	Step-console for Fendt series 102 - 108	<a href="#">100BC2341</a>
Document holder		<a href="#">100BC2144</a>



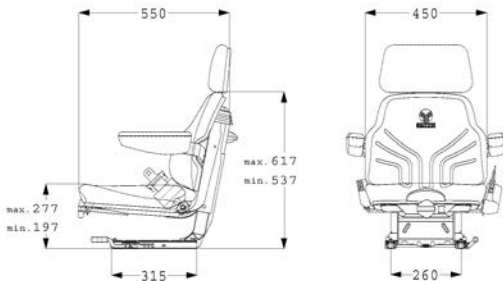
## UNIVERSO BASIC (MSG 44/520)



- Mechanical suspension
- Height adjustment
- Weight adjustment: 50 - 130 kg
- Control levers ergonomically placed
- Fore/aft adjustment

Seats	Description	REF
Standard version	Fabric (anthracite-green-silver)	<a href="#">100BC2342</a>
Standard version	PVC (black)	<a href="#">100BC2343</a>

Spare parts	Description	REF
Seat cushion	Fabric	<a href="#">100BC2331</a>
Backrest cushion	Fabric	<a href="#">100BC2332</a>
Seat cushion	PVC	<a href="#">100BC2299</a>
Backrest cushion	PVC	<a href="#">100BC2300</a>
Slide rails		<a href="#">100BC2345</a>



Mechanical suspension



Manual weight adjustment

Optional features	Description	REF
Backrest extension	Fabric	<a href="#">100BC2333</a>
Backrest extension	PVC	<a href="#">100BC2256</a>
Armrest	Left-hand, 54 x 300 mm	<a href="#">100BC2335</a>
Armrest	Right-hand, 54 x 300 mm	<a href="#">100BC2336</a>
Seat belt	Static	<a href="#">100BC2337</a>
Lap belt	Retractor	<a href="#">100BC2338</a>
Option	Vario-cons angular assy for KHD / John Deere	<a href="#">100BC2340</a>
Option	Step-console for Fendt series 102 - 108	<a href="#">100BC2341</a>
Document holder		<a href="#">100BC2144</a>



## DS44/1B

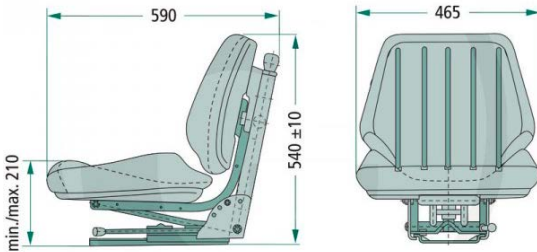


- Mechanical suspension
- Weight adjustment: 50 - 130 kg
- Fore/aft adjustment

Seats	Description	REF
Standard version	PVC (black)	<a href="#">100BC2346</a>

Spare parts	Description	REF
Seat cushion	Fabric	<a href="#">100BC2347</a>
Backrest cushion	Fabric	<a href="#">100BC2348</a>
Seat cushion	PVC	<a href="#">100BC2349</a>
Backrest cushion	PVC	<a href="#">100BC2350</a>
Backrest extension	PVC	<a href="#">100BC2256</a>

Optional features	Description	REF
Armrest	Left-hand, 65 x 270 mm, folding	<a href="#">100BC2351</a>
Armrest	Right-hand, 65 x 270 mm, folding	<a href="#">100BC2352</a>
Seat belt	Static	<a href="#">100BC2337</a>
Seat belt	Retractor, ALR	<a href="#">100BC2338</a>
Facility for lumbar support		<a href="#">100BC2353</a>



Mechanical suspension



Manual weight adjustment



A series of horizontal dotted lines for writing notes, filling most of the page.

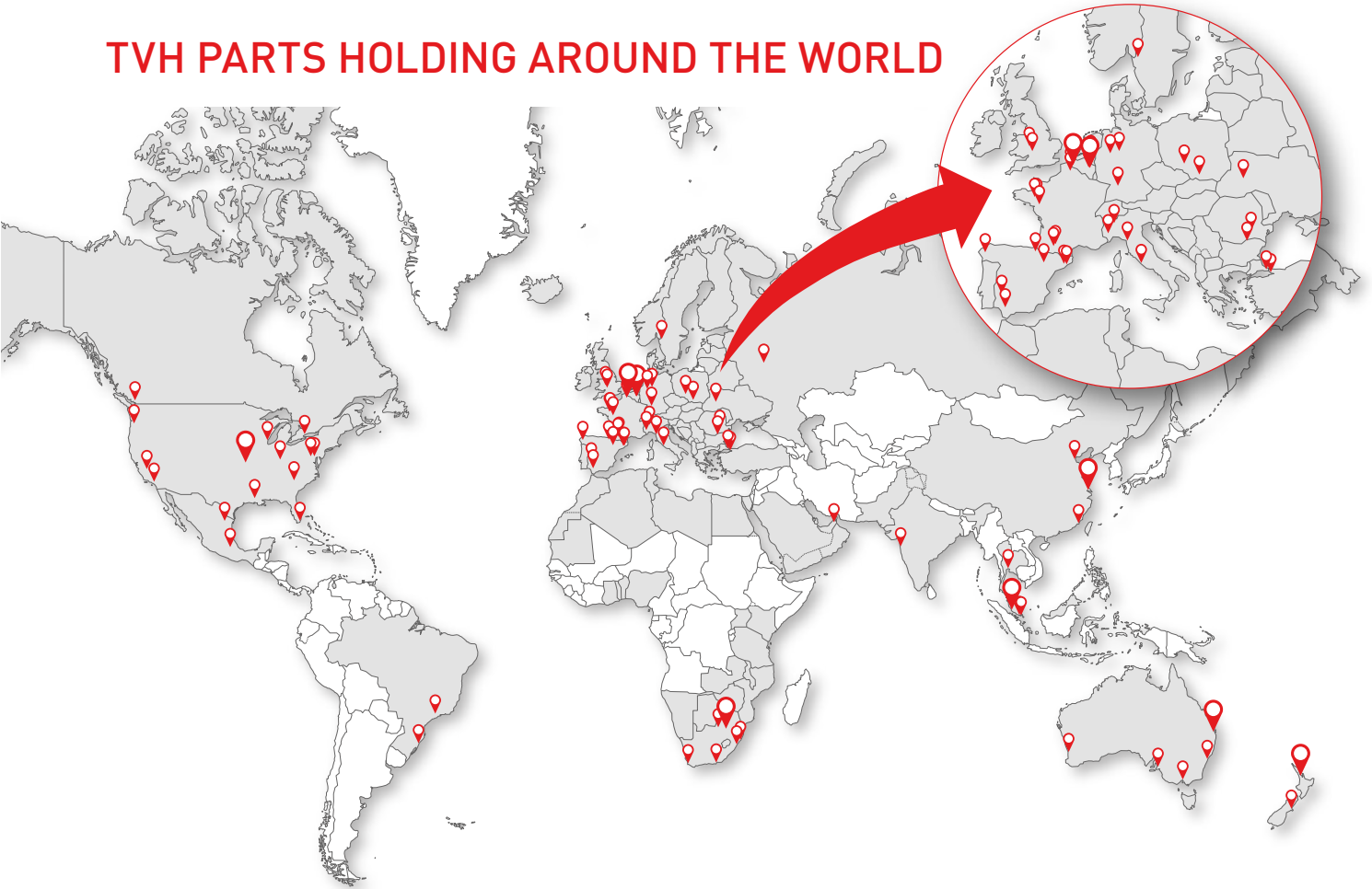


NOTES

A series of horizontal dotted lines for writing notes.





## TVH PARTS HOLDING AROUND THE WORLD



-  **AUSTRALIA**  
TVH AUSTRALIA PTY LTD  
*Dandenong South (Melbourne, Victoria) -  
Richlands (Brisbane, Queensland) -  
Weshpool (Perth, West Australia) -  
Wetherill Park (Sydney, New South Wales) -  
Wingfield (Adelaide, South Australia)*
-  **BELGIUM**  
TVH PARTS HOLDING NV  
*Waregem*  
TVH PARTS NV  
*Waregem - Gullegem*  
GEM ONE NV  
*Waregem*  
BEPCO PARTS SA  
*Hermalle-sous-Huy - Villers-le-Bouillet*
-  **BRASIL**  
TVH BRASIL PECAS LTDA  
*Araquari (Santa Catarina) - Vinhedo*
-  **BULGARIA**  
TVH BULGARIA LTD  
*Ruse*
-  **CANADA**  
TVH CANADA LTD  
*Mississauga (Ontario) - Port Coquitlam (British Columbia)*
-  **CHINA**  
TVH TRADING (SHANGHAI) CO, LTD  
*Shanghai - Tianjin*  
XIAMEN HEZE MECHANICAL EQUIPMENT CO LIMITED  
*Xiamen*  
XIAMEN YI HAI XING CHENG TRADING CO LIMITED  
*Xiamen*
-  **FRANCE**  
TVH FRANCE SASU  
*Wattrelos*  
FRANCE HAYON SERVICE SAS  
*Châteaubourg*  
GLACES DISTRIBUTION INTERNATIONALE - GDI SAS  
*Beaufort-en-Vallée*  
BEPCO FRANCE SAS  
*Agen - Janzé - Villeneuve-sur-Lot*

-  **GERMANY**  
TVH DEUTSCHLAND GMBH  
*Soest*  
GLASSINTER GMBH  
*Kirchheim unter Teck*  
INDUSTRIE SERVICE JUNG GMBH  
*Langenhagen*  
BEPCO DEUTSCHLAND GMBH  
*Soest*
-  **INDIA**  
TVH INDIA PVT LTD  
*Pune*
-  **ITALY**  
TVH ITALIA SRL  
*Marano Ticino (Novara) - Settimo Torinese (Torino)*  
CAM SRL  
*Marano Ticino (Novara)*  
ULIVIERI GSE SRL  
*Massarosa - Marano Ticino (Novara) -  
Settimo Torinese (Torino) - Fiumicino (Rome)*
-  **MALAYSIA**  
TVH MALAYSIA SDN BHD  
*Johor Bahru - Shah Alam (Kuala Lumpur)*
-  **MEXICO**  
TVH PARTS MEXICO, S DE RL DE CV  
*Cuautitlán Izcalli (Mexico City) - Santa Catarina Nuevo León*
-  **NETHERLANDS**  
BEPCO NEDERLAND BV  
*Heeswijk-Dinther*
-  **NEW ZEALAND**  
TVH NEW ZEALAND LTD  
*Christchurch - East Tamaki (Auckland)*
-  **POLAND**  
TVH POLSKA SP ZOO  
*Tychy*  
BEPCO POLSKA SP ZOO  
*Mysłenice*  
AGRO-JAN PRODUKCJA SP ZOO  
*Mysłenice*

-  **ROMANIA**  
BEPCO ROMANIA SRL  
*Negoiesti*
-  **RUSSIA**  
TVH RUS LLC  
*Dubrovka (Moscow)*
-  **SINGAPORE**  
TVH SINGAPORE PTE LTD  
*Jurong*
-  **SOUTH AFRICA**  
TVH PARTS SOUTH AFRICA (PTY) LTD  
*Durban - Isando (Johannesburg) -  
Korsten (Port Elizabeth) - Kraaifontein (Cape Town) -  
Lichtenburg - Richards Bay*
-  **SPAIN**  
TVH IBERICA 2008 SL  
*Badalona (Barcelona)*  
COMERCIAL AGRINAVA SL  
*Pamplona (Navarra)*  
BEPCO IBERICA SA  
*Almendralejo (Badajoz) - Badalona (Barcelona) -  
Dos Hermanas (Sevilla) -  
Santiago de Compostela (A Coruña) - Zaragoza (Zaragoza)*
-  **SWEDEN**  
TVH NORDIC AB  
*Ed*
-  **THAILAND**  
TVH PARTS (THAILAND) LIMITED  
*Bangkok*
-  **TURKEY**  
TVH YEDEK PARCA TICARET AS  
*Amavutköy (Istanbul, European) - Tuzla (Istanbul, Asian)*
-  **UKRAINE**  
BEPCO UKRAINE LLC  
*Tarnopol*
-  **UNITED ARAB EMIRATES**  
TVH MIDDLE EAST FZE  
*Sharjah*

-  **UNITED KINGDOM**  
TVH UK LIMITED  
*Coventry*  
RENTACLAMP (COVENTRY) LIMITED  
*Coventry*  
INDEPENDENT PARTS & SERVICE LIMITED  
*Coventry*  
BEPCO UK LIMITED  
*Hartlebury*
-  **USA**  
TVH PARTS CO  
*Duncan (South Carolina) - Fresno (California) - Grayslake (Illinois) -  
Harrisburg (Pennsylvania) - Miami (Florida) - Mira Loma (California) -  
Olathe (Kansas) - Portland (Oregon) - Shreveport (Louisiana)*  
C-TECH INDUSTRIES LLC  
*West Chester Township (Ohio)*  
SUPERIOR SIGNALS, INC  
*Olathe (Kansas)*  
GEM ONE US  
*Olathe (Kansas)*  
FLIGHT SYSTEMS INDUSTRIAL PRODUCTS COMPANY  
*Carlisle (Pennsylvania)*

### SALES REPRESENTATION IN THE FOLLOWING COUNTRIES:

Albania, Algeria, Austria, Bahrain, Belarus, Benin, Bosnia, Botswana, Canary Islands, Croatia, Cyprus, Denmark, Djibouti, Egypt, Estonia, Finland, Ghana, Greece, Hong Kong, Iceland, Ireland, Kosovo, Kuwait, Latvia, Lesotho, Libya, Lithuania, Macedonia, Malawi, Malta, Morocco, Mauritania, Moldova Republic, Montenegro, Mozambique, Namibia, Nigeria, Norway, Oman, Pakistan, Portugal, Qatar, Saudi Arabia, Serbia, Slovenia, Swaziland, Switzerland, Taiwan, Togo, Tunisia, Ukraine, Yemen, Zambia, Zimbabwe.





PARTS & ACCESSORIES



**TVH AUSTRALIA PTY LTD - HEAD OFFICE BRISBANE**  
ABN 67 117 701 587 - 60 Bernoulli Street - Darra QLD 4076 - Australia  
T +61 7 3717 3222 - F +61 7 3275 3881 - info.au@tvh.com - www.tvh.com

**BRISBANE**

735 Boundary Road  
Richlands QLD 4077  
T +61 7 3277 0877  
F +61 7 3277 0026  
brisbanesales@tvh.com

**ADELAIDE**

62-64 Wingfield Rd  
Wingfield SA 5013  
T +61 8 8359 1155  
F +61 8 8359 0600  
adelaidesales@tvh.com

**MELBOURNE**

7/66-74 Micro Circuit  
Dandenong South VIC 3175  
T +61 3 9544 6622  
F +61 3 9544 2617  
melbournesales@tvh.com

**PERTH**

2/15 Colin Jamieson Drive  
Welshpool WA 6106  
T +61 8 9358 2200  
F +61 8 9358 2822  
perthsales@tvh.com

**SYDNEY**

4/463 Victoria Street  
Wetherill Park NSW 2164  
T +61 2 9756 6677  
F +61 2 9756 3555  
sydneysales@tvh.com